

Proposed Ozona Field Clearfork Oil Reservoir Recompletion Program



Robert Barba

Austin Phoenix Resources LLC

3303 Northland Drive Ste 201

Austin, Tx 78731

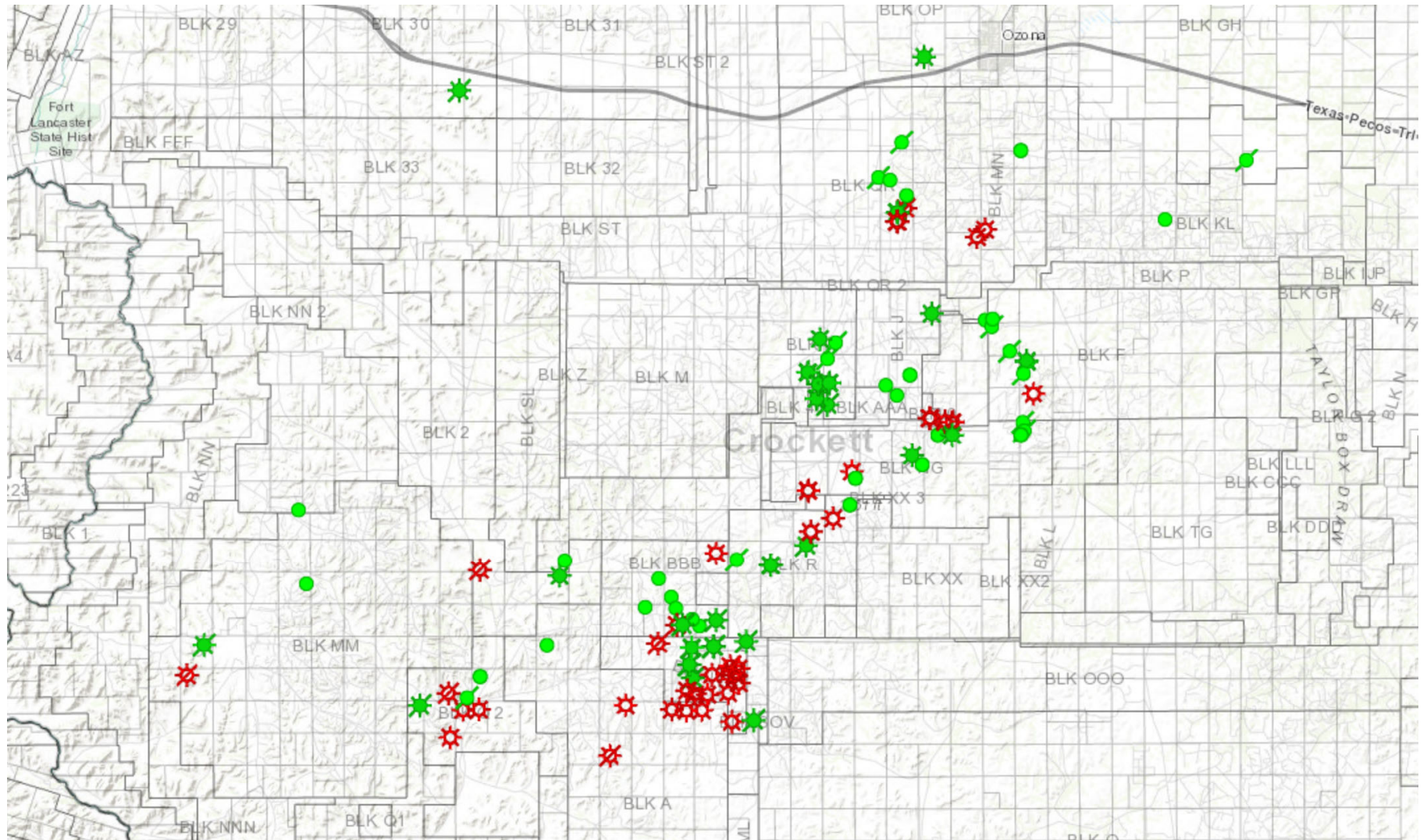
www.AustinPhoenixResources.com

March 22, 2021

Ozona Field Clearfork Reservoir

- The Clearfork formation in the vicinity of the Montgomery lease has produced over 2.1 million barrels of oil to date
 - Average recovery factor of 3.4% indicates 61.7 million barrels OIP
- The producers are in a corridor 24 miles long and 6 miles wide
- The primary trap is an unconformity that bisects the Montgomery lease
- There are a large number of Clearfork zones behind pipe above the main Canyon Sand gas reservoir within this corridor
- Many of these wells can be acquired by assuming the P&A liability only
- Completion results have been mixed, however recent advances in stimulation using produced water and microproppant should improve recoveries to at least 10% if not the typical 15% recovery expected for solution gas drive reservoirs

Crockett County Clearfork Producers



Ozona Field Clearfork Reservoir

- APR has identified 9 behind pipe Clearfork recompletions on their Montgomery Field acreage
- \$2.25 million total AFE at \$250,000 per well
- Recoverable oil 529,000 BO assuming an expected 15% recovery factor, NPV10 \$6.9 million IRR 94%
- A conservative 10% recovery factor has recoverable oil of 353,000 BO, NPV10 \$3.6 million IRR 50%
- APR proposes using the low cost WellsX “Liquid Frac” system (60% of the cost of a conventional frac spread) and has been used on ___ wells to date with excellent production results
- The system uses 200 mesh microproppant or fly ash with 2% KCL water, no gels or FR, frac “hits” seen over 1000 ft away
 - Liquid production to date has been as much as 400 BFPD

Proposed Trade

- Partner funds a pilot workover for one of the nine workover candidates, selection of candidate done by partner based on an evaluation of completion complexity
- Partner takes 100% WI in workover with 75% revenue interest
 - APR backs in for 25% after payout if field not sold
- Once proof of concept obtained partner has two options:
 - Option 1 purchase 100% WI in field from APR to develop other 8 candidates
 - Option 2 field would be sold to third party with proceeds split 75% to partner and 25% to APR

Ozona Field Clearfork Economics

10% Recovery Factor

Clear Fork Oil Well Economics			
Montgomery Lease 9 Well Workover Program All Wells			
NYMEX Strip 3/19/21			
		IP Oil BOPD	136.55
		EUR Oil BO	352,936
		Total Cash Flow undisc	\$ 11,450,728
WI	100%	Total Cash Flow disc	\$ 5,937,405
NRI	75.00%	Payout (undiscounted)	18
Disc Rate/IRR	10.0%	Payout (discounted)	21
LOE/Well	\$ 1,000	Undisc Net/Invest	5.09
MMBTU	1000	Disc Net/Invest	2.64
LOE Esc	0.0%	NPV	\$ 3,636,239
GOR	1.14	IRR	50.0%
Oil Severance	4.6%	AFE 100% WI	\$ 2,250,000
Gas Severance	7.5%	Per Well	\$ 250,000
		EUR Gas MCF	402,347

15% Recovery Factor

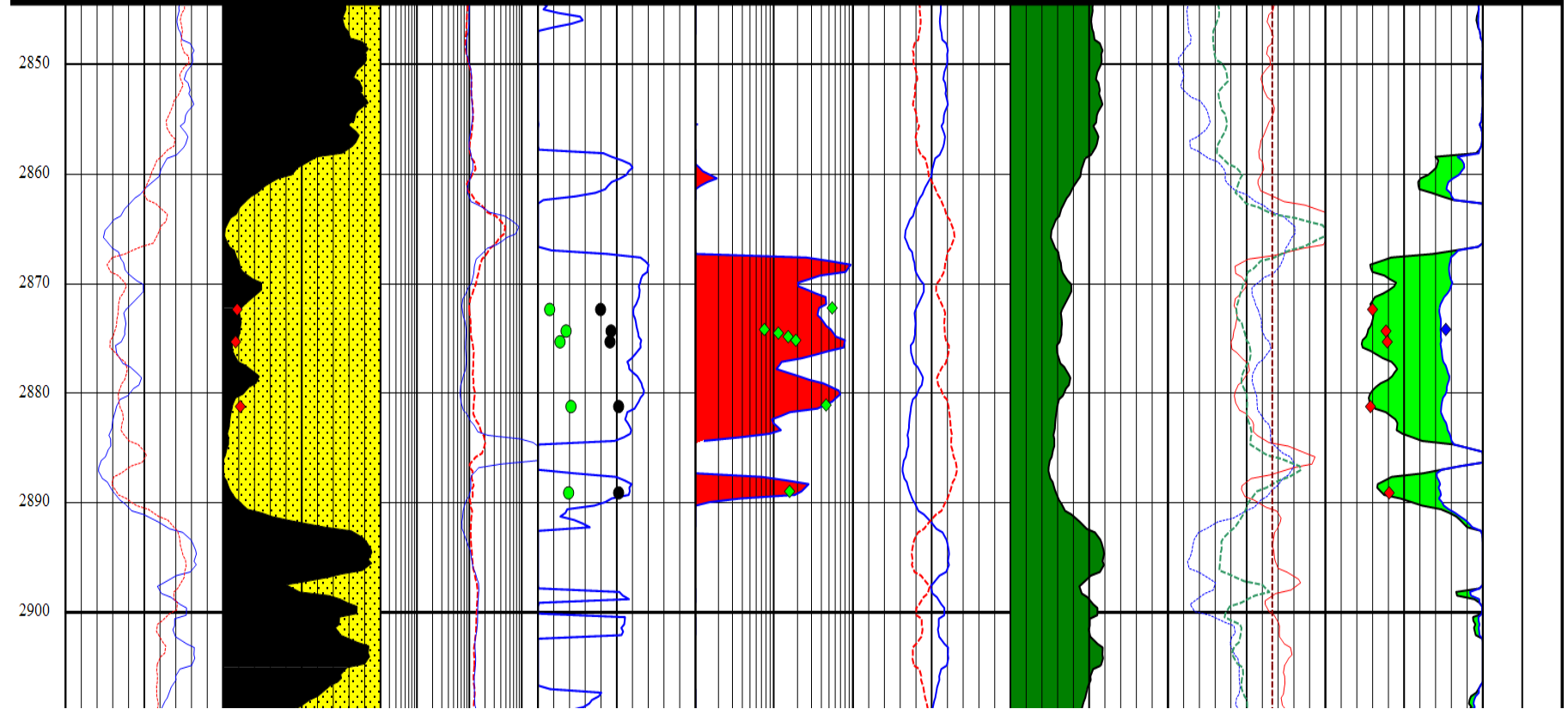
Clear Fork Oil Well Economics			
Montgomery Lease 9 Well Workover Program All Wells			
NYMEX Strip 3/19/21			
		IP Oil BOPD	204.82
		EUR Oil BO	529,404
		Total Cash Flow undisc	\$ 18,387,716
WI	100%	Total Cash Flow disc	\$ 9,310,646
NRI	75.00%	Payout (undiscounted)	10
Disc Rate/IRR	10.0%	Payout (discounted)	10
LOE/Well	\$ 1,000	Undisc Net/Invest	8.17
MMBTU	1000	Disc Net/Invest	4.14
LOE Esc	0.0%	NPV	\$ 6,963,772
GOR	1.14	IRR	94.0%
Oil Severance	4.6%	AFE 100% WI	\$ 2,250,000
Gas Severance	7.5%	Per well	\$ 250,000
		EUR Gas MCF	603,521

Ozona Field Clearfork Reservoir

- The Clearfork oil formation has been marginally productive in the VIP field area in spite of favorable reservoir conditions:
 - 2800 to 3000 ft, 23 ft avg pay, 11.4% avg porosity, 0.26 md oil perm
 - Water free production, all sands at irreducible saturation
- Numerous operators have come uphole from the main field gas pay to complete the Clearfork oil sand with mixed results
- In the VIP field area and to the east 14 producing wells averaged 13,676 BO EUR vs an average of 63,374 BO recoverable per producing well with a 15% recovery factor
 - These 14 wells averaged a 3.4% recovery factor
- Detailed special core analysis indicated that there were no water sensitive clays and the zone should have normal recovery factors for the 38 API gravity 1279 GOR reservoir
- A low cost frac program is proposed that delivers maximum conductivity from long fracs with minimal formation damage

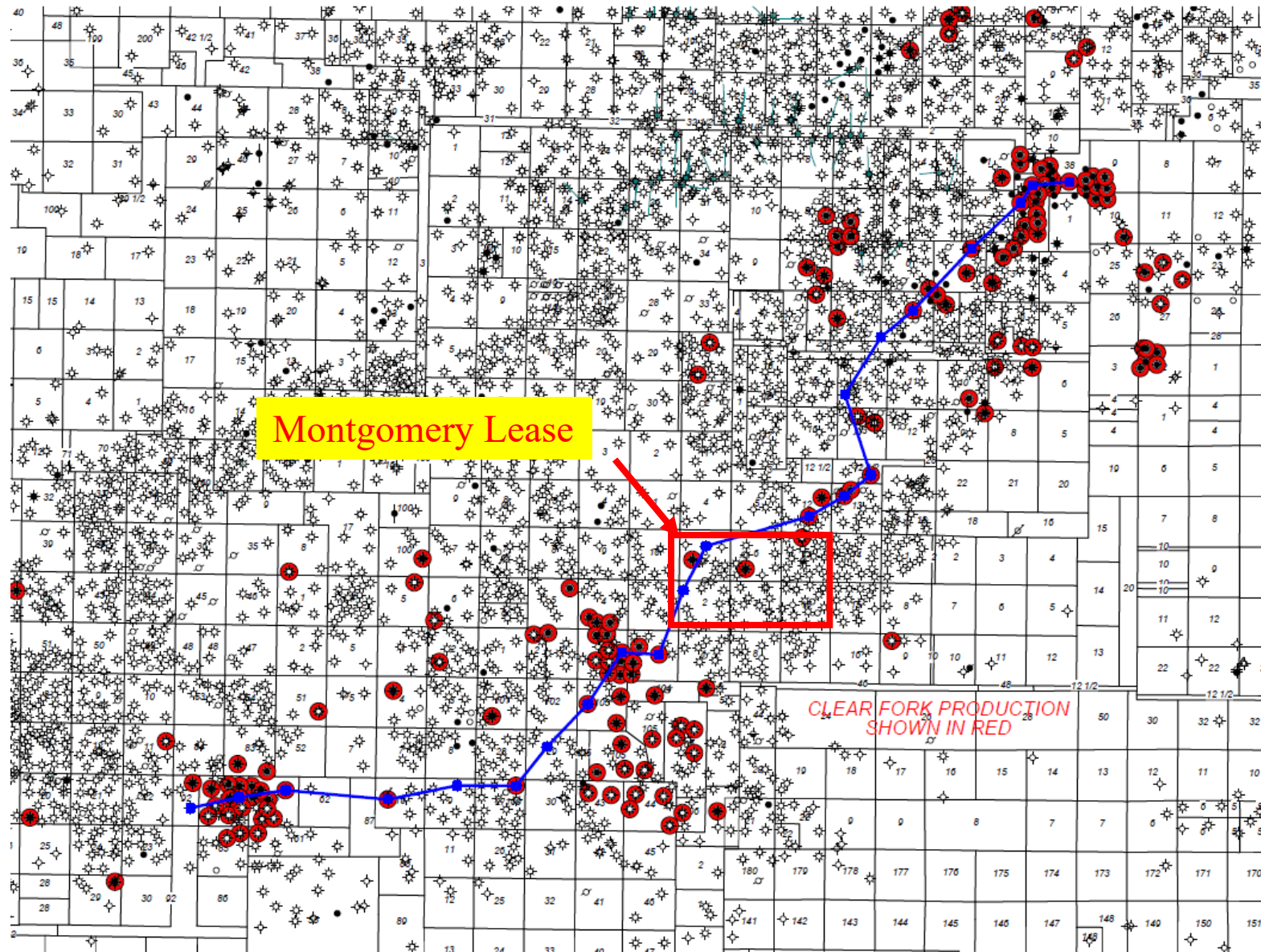
4210537213 Montgomery 11-15 vs Core

DEPTH	GRDT	VCLQ	DDLLp	SWQ	koil1	PRCANYDT	CSGDT	DEN	PHINOB	(PERFS)
ft	gAPI 150	0 1	ohmm 200	dec 0	0.01 1	0.5	0.5 1	g/cc 2.71	20	0 5
	rhomand	XRD	DSLL	SOCORE	PERMCFOIL	EMCANYND	Dk_Green	NPRL	PHIEQ	Red
	g/cc 3	0 100	ohmm 200	0 100	0.01 md 1	10	CSGDT	V/V 0	0 0	PERFS
		vqtz		swcore	Red			sphi	BVWQ	
		0 1		100	0 0.01			dec 0	0.2 dec 0	
								rhobavg	bvi	
								2.2 None 2.71	0.2	0



Top	Base	H	PHI	SW	Perm	BVW	OOIP 40	15% RF	5% RF
2860.344	2890.192	21.32	0.124	0.392	0.326	0.049	426,321	63,948	21,316

Ozona Area Clearfork Producers



Montgomery Lease Area Producing Clearfork Offset Wells

Well/Lease Name	No	First Prod Date	Last Prod Date	Cum Gas	Cum Oil	EUR Oil	Log OIP	RF	Frac Details
PIERCE, V. I.	1	2/1/1968	10/1/2019	48311	39402	40,200	629,663	6.4%	40 kgal 50 klb
PIERCE, V.I. 103 A	7	1/1/2003	9/1/2019	18501	19057	28,157	309,110	9.1%	40 klb 16/30
PIERCE, V. I. (NCT-B)	6	6/1/1993	7/1/2004	0	17369	18,700	256,766	7.3%	33 40lb lg/40% co2/53 klb 2040
VICTOR	1	1/1/1969	7/1/1994	1451	13783	18,100	524,202	3.5%	4 KGAL 5 KLB
VICTOR	2	5/1/1969	7/1/1994	2466	12649	17,300	419,146	4.1%	45/55
HOOVER	4	10/1/2017	10/1/2019	0	3355	14,872	409,482	3.6%	50 KLB W GEL
MONTGOMERY, C.C. 12C	5	4/1/2003	9/1/2019	0	12791	13,500	189,300	7.1%	N2 and 16/30 listed
MONTGOMERY, C.C. '6D'	2	11/1/2002	10/1/2019	18548	10272	13,496	305,042	4.4%	42 kgal 66.5 klb
HOOVER "13"	4 U	9/1/1977	1/1/2017	1907	12499	13,130	670,704	2.0%	36 kgal 41 klb
V. I. PIERCE STATE "A" (NCT-C)	6	8/1/1990	11/1/2003	15878	11189	11,800	398,756	3.0%	21/67.5 BORATE HPG
HOOVER	3	2/1/2011	11/1/2018	0	8740	8740	524,557	1.7%	120 klb
PIERCE, V. I. (NCT-B)	5	6/1/1982	8/1/2005	14305	6733	8,500	338,364	2.5%	16.5/39
PIERCE, V. I.	1	7/1/1981	9/1/1991	18800	4569	6,300	661,208	1.0%	sent alok cf 1/1
MONTGOMERY, C. C.	124	10/1/1983	9/1/1986	10448	4431	5,100	355,595	1.4%	NA CANYON ONLY
PIERCE, V. I. 10	4	6/1/2003	9/1/2019	4247	4647	4,800	44,166	10.9%	SENT KAPIL
HOOVER	1	11/1/1977	10/1/2019	2057	3088	3,400	356,060	1.0%	45 KLB
HOOVER	3		offset to 42404	2092	3112	3,112	537,860	0.6%	26/36klb 2040 31T CO2 6klb100
MONTGOMERY, C. C.	34	1/1/1984	9/1/1986	7817	1613	1,850	289,077	0.6%	NA
MONTGOMERY, C. C.	1110	10/1/1984	9/1/1986	18700	330	330	504,237	0.1%	30 KGAL 70q/42 KLB 20/40

Best producer in area 40,200 BO EUR

Clearfork recovery factors low, 5% worst case assumed

15% recovery factor expected case

2% KCL water WellsX treatment eliminates gel damage

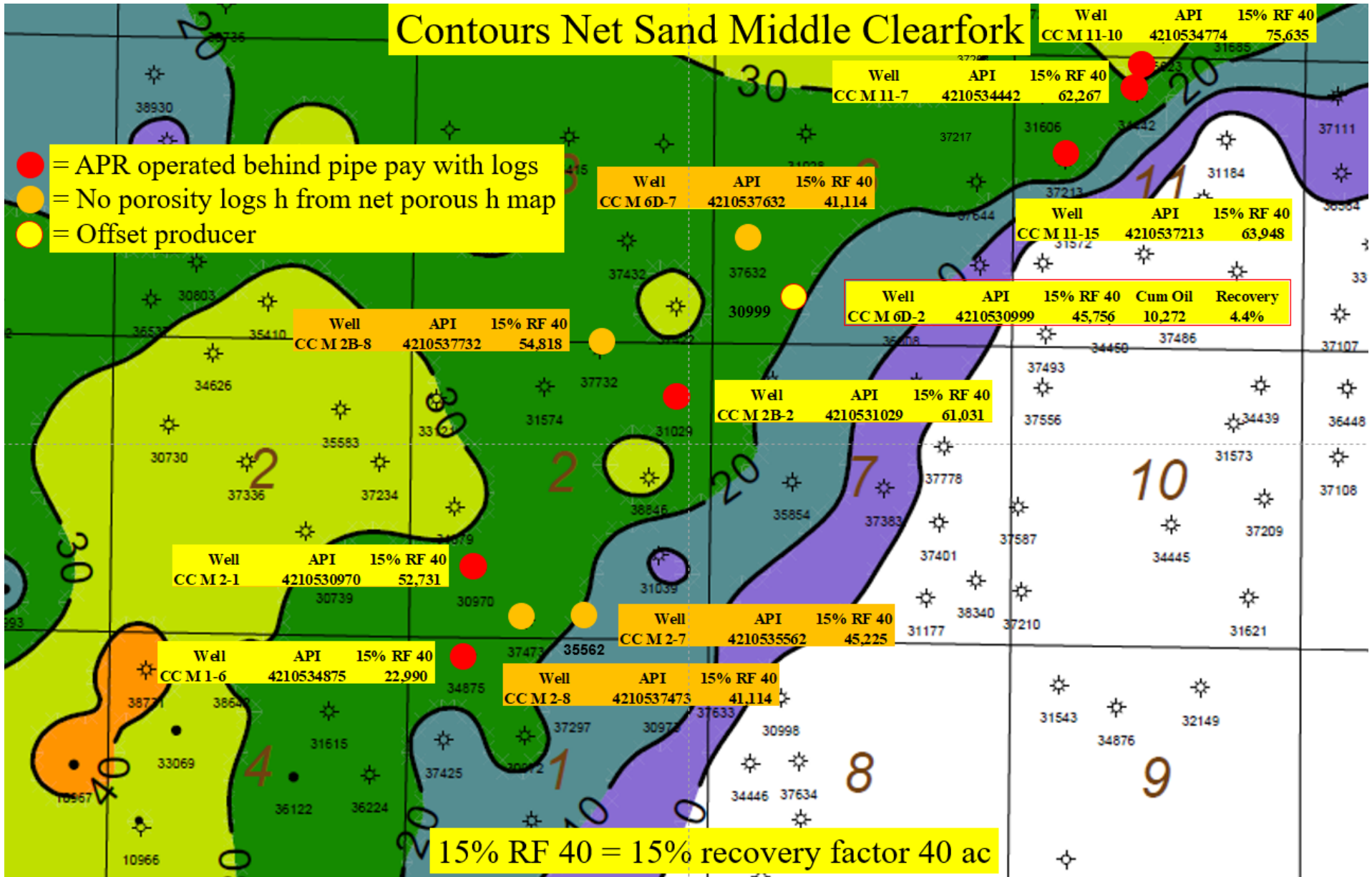
Creates complex fractures with over 1000 ft length

APR Montgomery Lease Net Pay

API	Well	Top	Base	H	PHI	SW	Perm	BVW	OOIP 40	15% RF	BO 10%	FVF
4210537213	Montgomery 11-15	2860.344	2890.192	21.32	0.124	0.392	0.099	0.049	426,321	63,948	42,632	1.17
4210534442	Montgomery 11-7	2904	2924	19.5	0.126	0.363	0.197	0.046	415,115	62,267	41,512	1.17
4210534774	Montgomery 11-10	2896	2925	27	0.116	0.393	0.089	0.046	504,237	75,635	50,424	1.17
4210530970	Montgomery Estate 1-2	2663.5	2689	23.5	0.100	0.436	0.029	0.044	351,537	52,731	35,154	1.17
4210531029	Montgomery 2B2	2771.5	2796	24	0.106	0.397	0.062	0.042	406,872	61,031	40,687	1.17
4210537632	Montgomery 6D7	No log-h from net porous h		15	0.114	0.396	0.100	0.045	274,092	41,114	27,409	1.17
4210537732	Montgomery 2B8	No log-h from net porous h		20	0.114	0.396	0.100	0.045	365,456	54,818	36,546	1.17
4210537473	Montgomery 2-8	No log-h contoured		22	0.114	0.396	0.100	0.045	402,002	60,300	40,200	1.17
4210535562	Montgomery 2-7	No log-h contoured		21	0.114	0.396	0.100	0.045	383,729	57,559	38,373	1.17

Contours Net Sand Middle Clearfork

- = APR operated behind pipe pay with logs
- = No porosity logs h from net porous h map
- = Offset producer



Well	API	15% RF 40
CC M 11-10	4210534774	75,635

Well	API	15% RF 40
CC M 11-7	4210534442	62,267

Well	API	15% RF 40
CC M 6D-7	4210537632	41,114

Well	API	15% RF 40
CC M 11-15	4210537213	63,948

Well	API	15% RF 40
CC M 2B-8	4210537732	54,818

Well	API	15% RF 40	Cum Oil	Recovery
CC M 6D-2	4210530999	45,756	10,272	4.4%

Well	API	15% RF 40
CC M 2B-2	4210531029	61,031

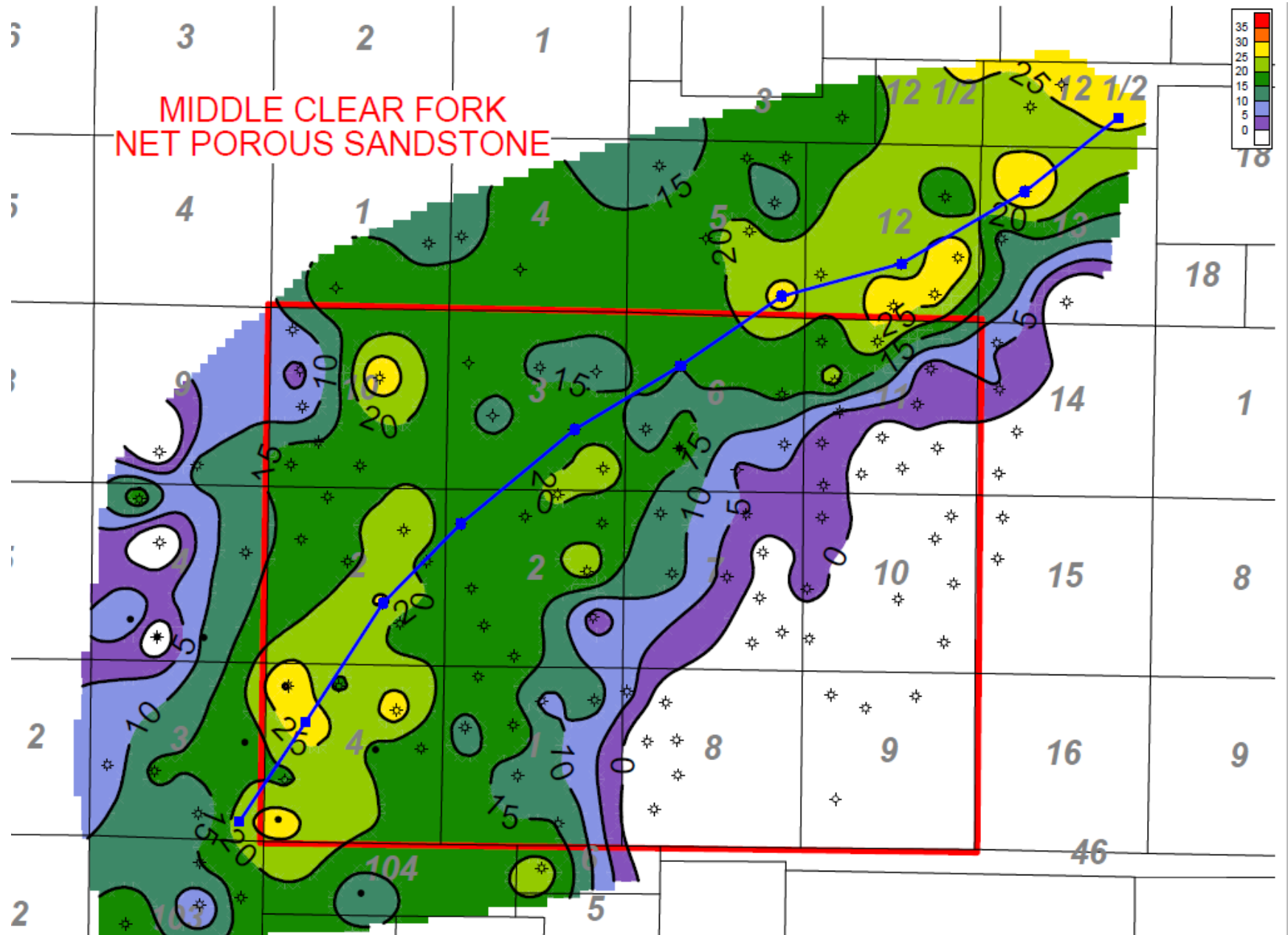
Well	API	15% RF 40
CC M 2-1	4210530970	52,731

Well	API	15% RF 40
CC M 2-7	4210535562	45,225

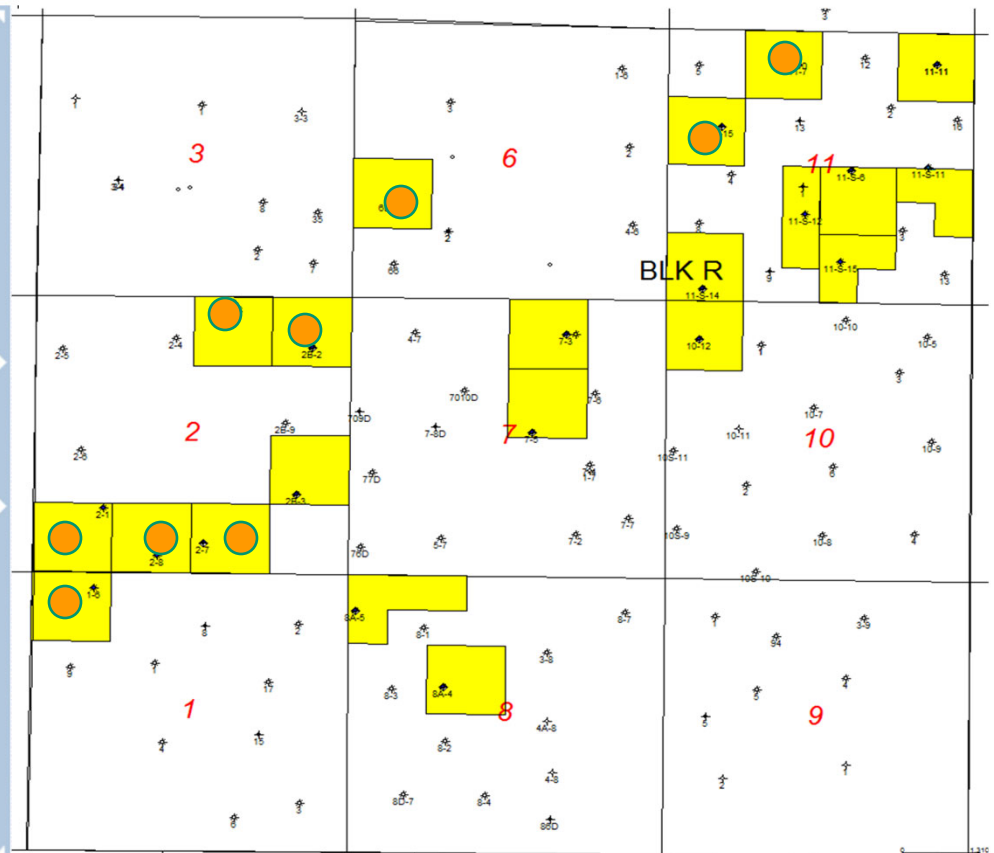
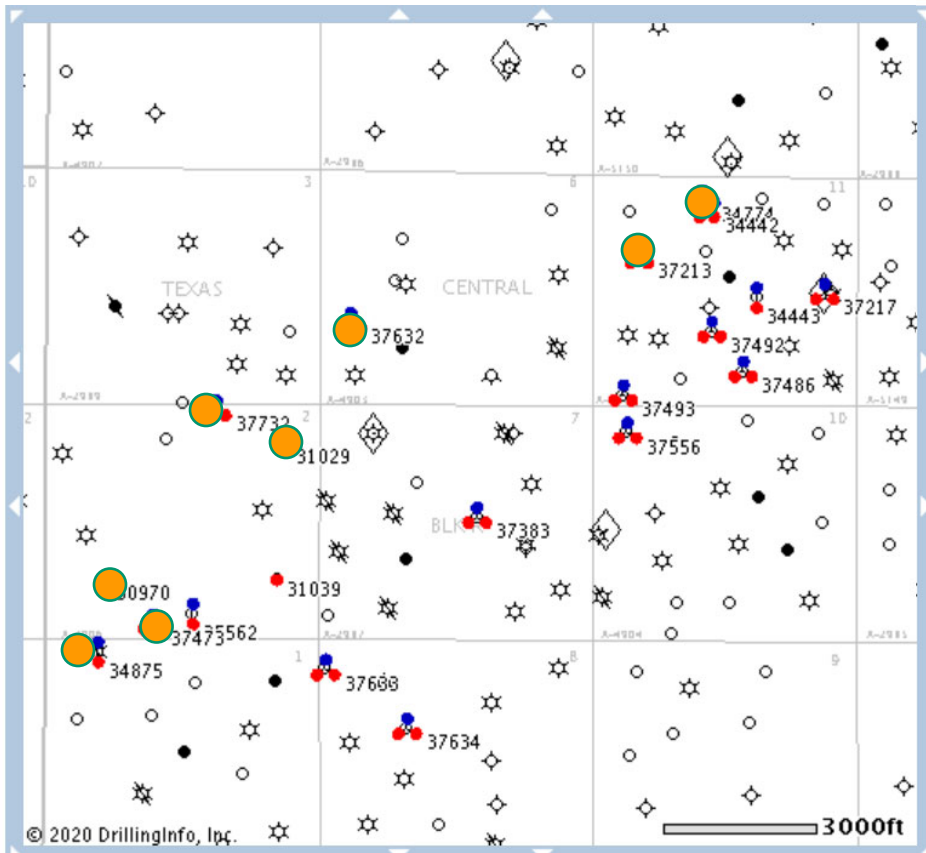
Well	API	15% RF 40
CC M 1-6	4210534875	22,990

Well	API	15% RF 40
CC M 2-8	4210537473	41,114

15% RF 40 = 15% recovery factor 40 ac



Difference between net sand and net porous sand = diagenetic cementation



CC M 1-6	34875
CC M 6D-7	37632
CC M 2-1	30970
CC M 2B-8	37732
CC M 2-7	35562
CC M 2-8	37473
CC M 2B-2	31029
CC M 11-7	34442
CC M 11-15	37213
CC M 11-10	34774

Producing Clearfork Offsets

API	15% RF	RF
4210531585	80,679	0.6%
4210542402	73,181	3.0%

API	15% RF	RF
4210539427	78,684	1.7%

API	15% RF	RF
4210530287	53,409	1.0%

42402
2017 frac

API	15% RF	RF
4210534060	53,339	1.4%

API	15% RF	RF
4210537680	42,680	4.7%

API	15% RF	RF
4210531600	100,606	1.9%

API	15% RF	RF
4210532979	6,625	10.9%

API	15% RF	RF
4210534057	43,362	0.6%

API	15% RF	RF
4210534774	75,635	0.1%

API	15% RF	RF
4210530999	45,756	4.4%

API	15% RF	RF
4210510967	94,449	6.4%

API	15% RF	RF
4210511083	78,630	3.5%

API	15% RF	RF
4210533069	50,755	2.5%

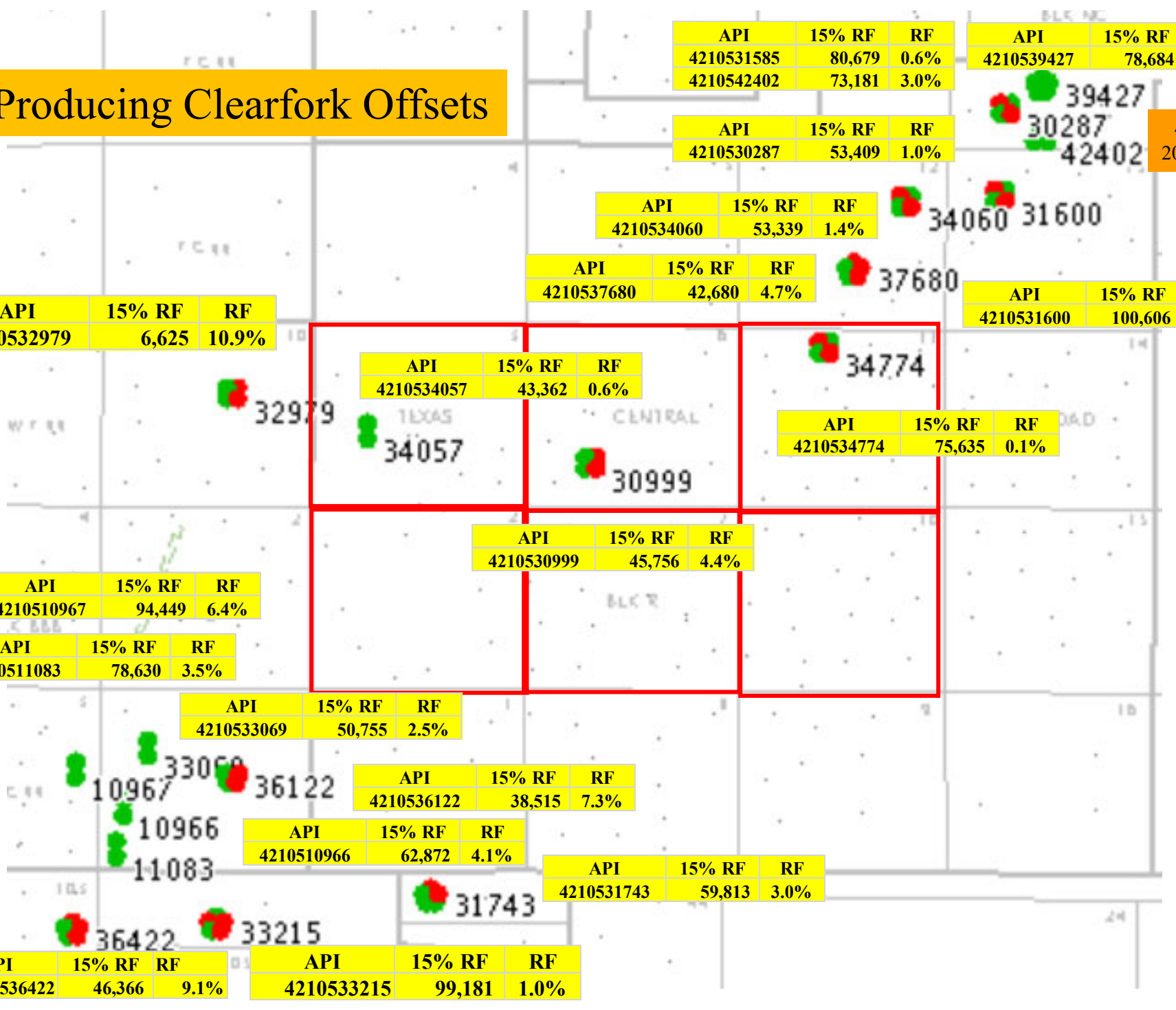
API	15% RF	RF
4210536122	38,515	7.3%

API	15% RF	RF
4210510966	62,872	4.1%

API	15% RF	RF
4210531743	59,813	3.0%

API	15% RF	RF
4210536422	46,366	9.1%

API	15% RF	RF
4210533215	99,181	1.0%



Ozona Clearfork Field Detail

API	15% RF	RF
4210539427	78,684	1.7%

API	15% RF	RF
4210530287	53,409	1.0%

42402
2017 frac

API	15% RF	RF
4210531585	80,679	0.6%
4210542402	73,181	3.0%

API	15% RF	RF
4210534060	53,339	1.4%

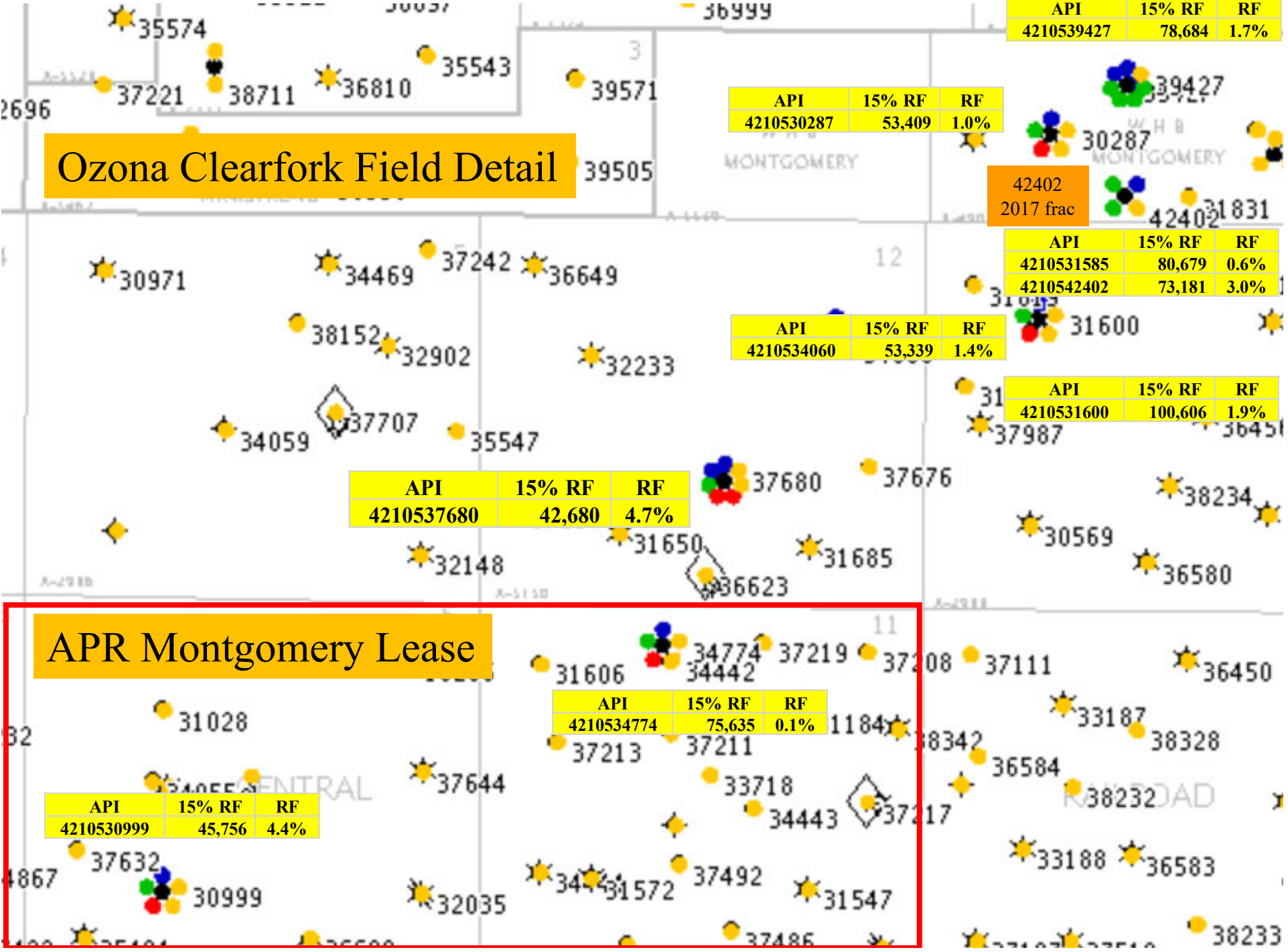
API	15% RF	RF
4210531600	100,606	1.9%

API	15% RF	RF
4210537680	42,680	4.7%

APR Montgomery Lease

API	15% RF	RF
4210530999	45,756	4.4%

API	15% RF	RF
4210534774	75,635	0.1%



37213 Montgomery 11-15 Science Well

- Well was completed by UPRC with 2 7/8 inch tubingless configuration, top of cement within tubing and 4.5 inch casing annulus 5450
- Tubing was cut, parted, and eventually fished out
- Openhole logs and rotary sidewall cores were run to evaluate porosity, perm, and mineralogy
- A novel technique used at Shell Research was used that involved cleaning, saturating, NMR, spinning in a centrifuge, NMR again, and flowing oil through the core at S_w irreducible to properly measure oil perm
- The NMR analysis was used to validate the S_w model, BVI from calibrated NMR 0.047 BVW 0.049

SUMMARY OF ROTARY CORE ANALYSES RESULTS

Vacuum Dried at 180°F Net Confining Stress: 2000 psi

Austin Phoenix Resources, Inc
Montgomery 11-15 Well

Crockett County, Texas
File: HH-63963
Date: 6-4-13

Run Number	Sample Number	Sample Depth, feet	Permeability, millidarcys		Porosity, percent		Grain Density, gm/cc	Fluid Saturations, percent			Lithological Descriptions
			to Air	Klinkenberg	Ambient	NCS		Water	Oil	Total	
1	1-1R	2872.0	1.08	0.849	14.2	14.0	2.65	60.3	7.4	67.6	Ss,vfg-fg
1	1-2R	2874.0	0.185	0.117	12.4	12.3	2.65	53.6	17.8	71.5	Ss,vfg-fg
1	1-3R	2875.0	0.417	0.293	12.3	12.1	2.65	54.3	14.0	68.3	Ss,vfg-fg
1	1-4R	2881.0	0.940	0.711	14.4	14.3	2.65	48.8	20.9	69.8	Ss,vfg-fg
1	1-5R	2889.0	0.353	0.244	12.0	11.9	2.66	48.8	19.4	68.2	Ss,vfg-fg
Average values:			0.595	0.443	13.1	12.9	2.65	53.2	15.9	69.1	

LABORATORIES

WEATHERFORD LABORATORIES X-RAY DIFFRACTION (WEIGHT %)

Client: Austin Phoenix Resources, LLC
Well: Montgomery 11-15
Area: Crockett County, TX
Sample Type: Rotary Sidewall Core

File No: HH-63963
Date: 06/03/13
Analyst: R. Schulze

Sample Number	Sample Depth (ft)	CLAYS				CARBONATES			OTHER MINERALS						TOTALS		
		Chlorite	Kaolinite	Illite/Mica	Mx I/S*	Calcite	Dol/Ank ¹	Siderite	Quartz	K-spar	Plag.	Pyrite	Halite**	Barite	Clays	Carb.	Other
1-1R	2872.0	2	Tr	6	1	Tr	Tr	Tr	66	6	16	1	2	0	9	Tr	91
1-3R	2875.0	1	Tr	6	1	Tr	0	Tr	71	6	14	Tr	1	0	8	Tr	92
1-4R	2881.0	1	Tr	8	2	Tr	Tr	Tr	70	4	13	1	1	0	11	Tr	89
AVERAGE		1	Tr	7	1	Tr	Tr	Tr	69	5	15	1	1	0	9	Tr	91

* Ordered interstratified mixed-layer illite/smectite; Approximately 15-20% expandable interlayers

¹ Dolomite species interpretation based on the d-spacing of the highest intensity peak of dolomite group minerals; other dolomite species may be present.

**Samples were not cleaned, halite is possibly from formation water, other indigenous sources, or drilling.

No significant swelling clays
Good quality sandstone, should have normal recovery factors

4210537213 Montgomery 11-15 AFE Items

- 3000 ft of 4.5 inch casing
- Cement above 1000 ft or to surface (TOC 1228)
- Perforations 2868-90, frac down casing
- 2850 ft of 2 3/8 production tubing
- Separator, tanks, pump jack, flow lines
- AFE \$282,420 with 20% contingency

Clearfork Completion Issues

- Wells are relatively shallow, bottomhole temperature 100-105F pressure 1150-1250 psi
- Complete detailed analysis pending, however majority of wells evaluated so far were fraced with borate crosslinked gels
- Borate gels have been notorious for gel damage at low temperatures (below 130F) as oxidizing persulfate type breakers are not effective below that temperature
- Enzymes are more effective but not as common as oxidizing breakers

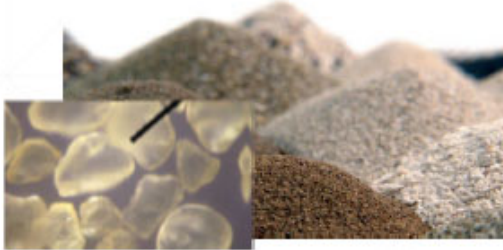
Clearfork Completion Issues (contd)

- XRD analysis indicates no significant smectite clays with swelling tendencies
- No viscosity issues with 38 API average gravity
- No known paraffin or asphaltene issues
 - These can be dealt with during production if an issue
- WellsX treatment with 2% KCL water and 100,000 lb of 200 mesh should not create any formation damage
- Gelled fluids must be broken at these low bottomhole temperatures, most likely damage mechanism
- Completion with thin fluids and subsequent frac complexity should work well for gel frac well refracs

Proposed Clearfork WellsX Fracs

- Single pump truck see next slide
- 2% KCl water fluid with 100,000 lb 140/200 mesh proppant, no gel or friction reducer
- Maximum pump rate 6 BPM
- Mixed success of earlier treatments probably related to bottomhole temperatures (101F) below minimum temperature for most commonly used oxidizing breakers for gelled fluids
- First well (11-15) has 7 7/8 open hole below 1228 ft, need to run new 4.5 inch casing to 3000 ft and cement prior to treatment AFE \$282,420
- Second well (11-7) will need to have tubing pulled, plug set at 3000 ft, and cement squeeze across perms prior to treatment AFE \$315,480
- Both AFEs have a 20% contingency applied

WellsX “Liquid Frac” System vs Conventional Spread



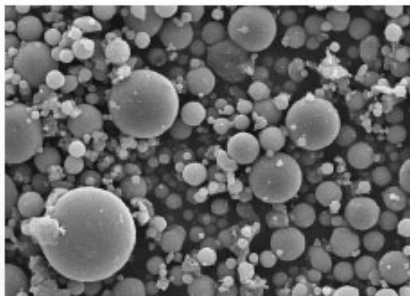
Conventional Proppant:
Smallest is 100 mesh and irregularly shaped

High Velocity, High HP

Chemical Additives,
Gelling agents



Conventional Frac Spread
is very large



Wellsx Proppant:
325 mesh and perfect ceramic ball bearings ✓

Low Velocity, Low HP ✓

Just Water ✓



Wellsx Frac Spread
is much smaller ✓

Proppant Distribution and Permeability

- Proppant is delivered into the fractures in a “duning” process

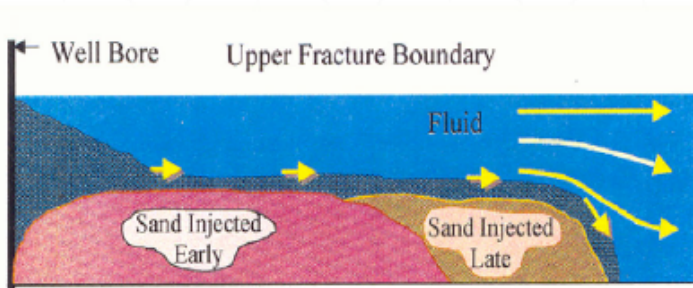


Figure 14 Proppant Transport in Slickwater (from Kern, Perkins, Wyant,⁴³ and Patanker⁴⁴)
SPE 115390 November 2010 & 114173 in 2008

- The actual frac is characterized by having a proppant bed with a very high perm ullage at its top, such that reservoir fluid flows vertically in the proppant bed to feed the high perm ullage flowing back to the well bore

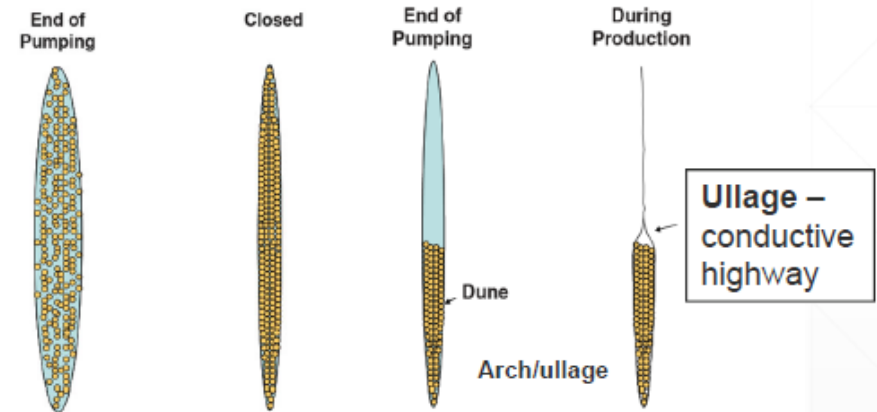


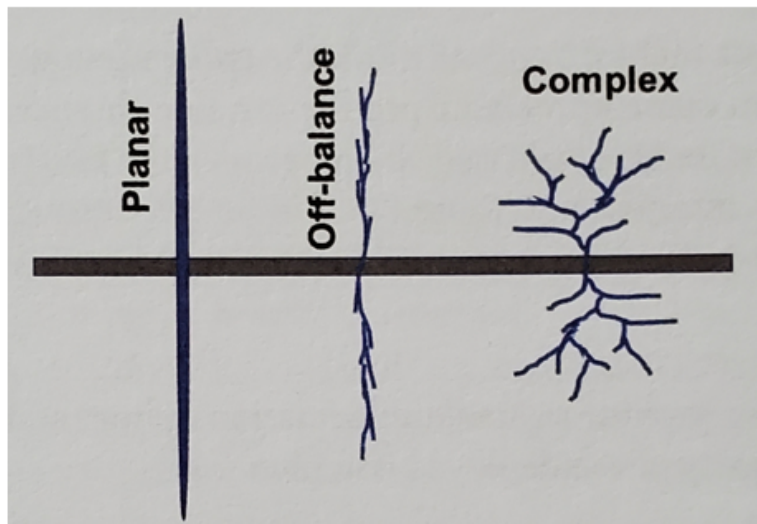
Fig. 1—Fracture geometry for perfect transport.

Fig. 2—Dune geometry.

What the models predict

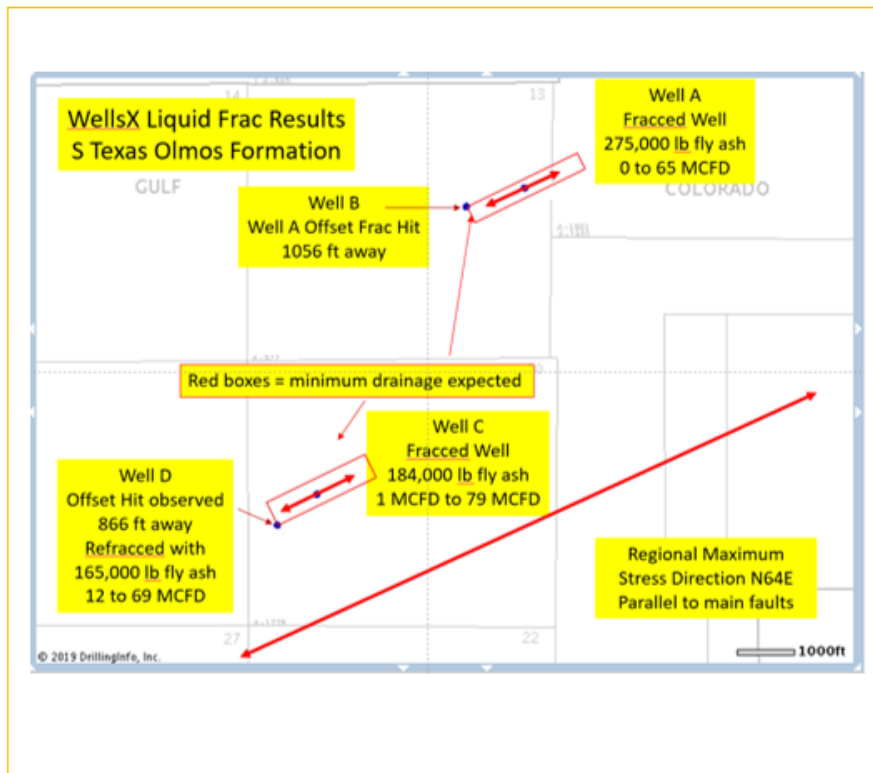
What you get according to N.R. Warpinsky.

WellsX “Liquid Frac” System Details



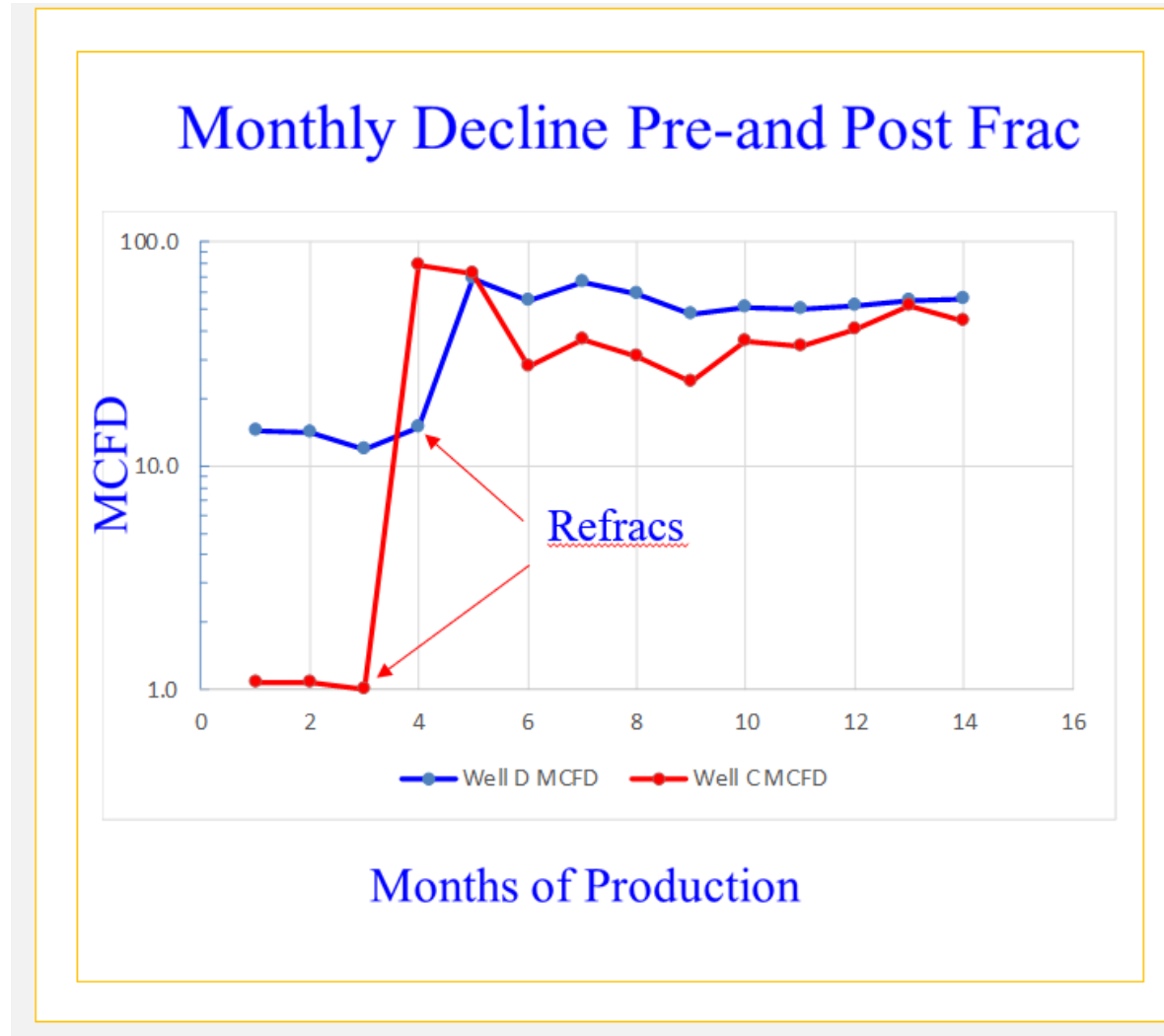
- WellsX patented “Liquid Frac” with a single 6 BPM pump truck
- Fly ash or 140/200 mesh microproppant pumped, up to 10 lb/gal and 450,000 lb total pumped to date using water, no FR or gel
- Highly complex fracture network created with “hits” up to 1056 ft away
- 42 successful fracs pumped to date, with fresh, produced, or KCL water
- Frac “hits” suggest fracs are inbetween “complex” and “off-balance” (Daneshy 2003), not planar

Frac “Hits” over 1000 ft Away!



- Frac “hit” locations at a significant distance from the refracted wells
- Drainage areas comparable or superior to conventional planar frac results
- Water sensitive rock so results very pessimistic vs proposed oil based system, 10% recovery factor prior to water based refracs
- Water based system with 200 mesh sand to be used on Clearfork oil reservoir project

S Texas Olmos Refrac Successes



Relatively flat declines, same wells from previous frac hit slide

Liquid Frac vs Conventional Fracs

Alike

- Both Initiate Fracture to Open Formation
- Both Use Proppant
- Both Aim to Increase Permeability to Hydrocarbons
- Both Require Fluids, Hydraulic Horsepower, Flow Back

Differences

- LF Objective is establish Microfracture Conductivity
- Suspension Characteristics of LF Proppant greatly improved settling velocity versus CF Sands
- No Polymer or Chemical in LF, we are using fresh water 2% KCL or produced field water
- LF is a natural Alkaline, Clay Stabilizer, with return ph of 10.2
- LF proppant loading from 1 ppg up to 12.5 ppg
- LF pumps at rates as slow as 3 bpm, enabling deployment down existing production tubing of 2 3/8" and larger
- LF fluid recovery is typically +90% of pumped volume on flow back
- LF HP is 1,200 HP vs. Conventional HP of 50,000 HP

Cost Reduction with Liquid Frac

- We are able to deliver frac job down tubing and have done through 2 3/8" tubing, Thus..
 - Eliminating need for W/O Rig and pulling of Tubing
 - No need to pull packer and associated redress and re-run cost
 - Able to pump down around sucker rods and pump leaving them in existing well
- HP requirements on location are typically 2,500 HP to 3,000 HP
- Smaller Volumes of water, water storage, and water transport are utilized
- Few personnel required on location
- Utilize more economic Cement Mixing methods

Fracture Permeability

$$K_f = 8.444 \times 10^6 W_f^2$$

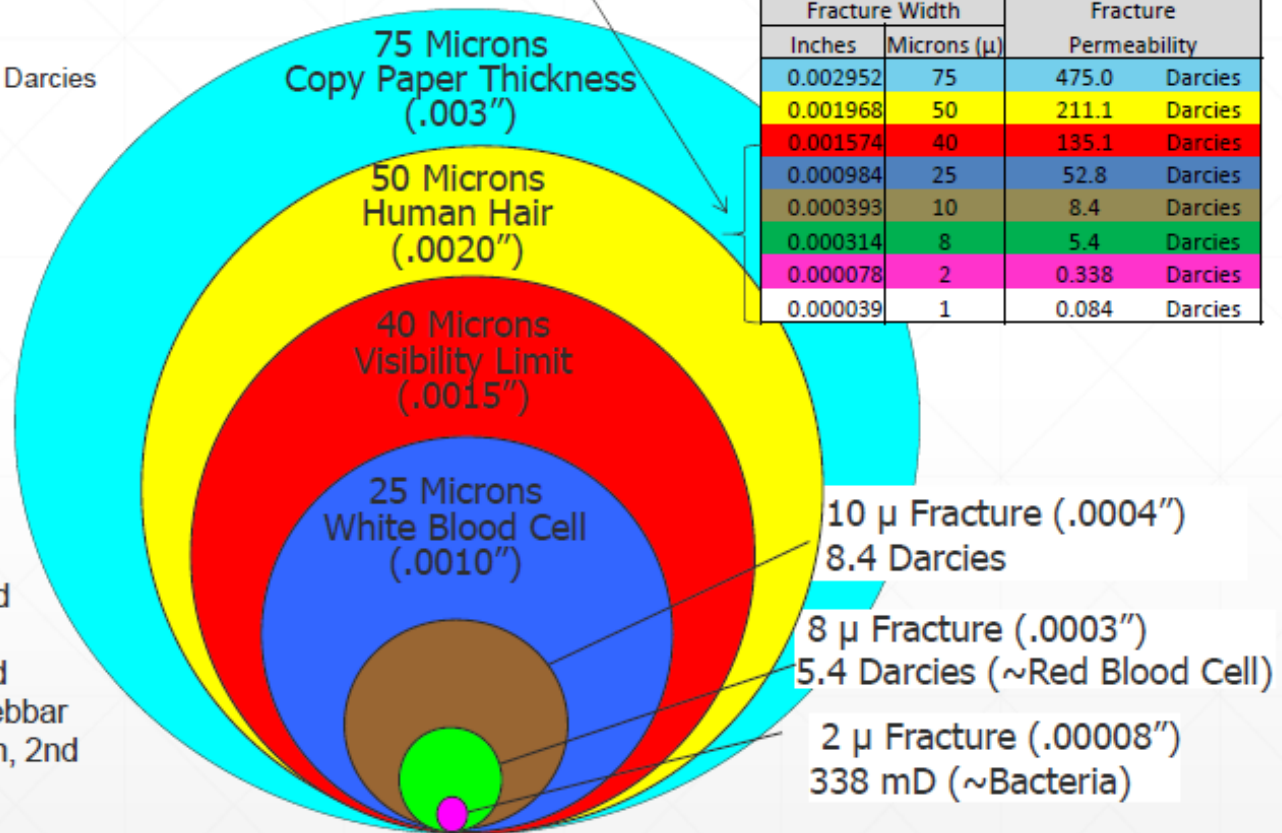
Where:

K_f = fracture permeability in Darcies
 W_f = fracture width in cm

.001" = .0000254 meters
 .001" = 25.4 microns (μ)

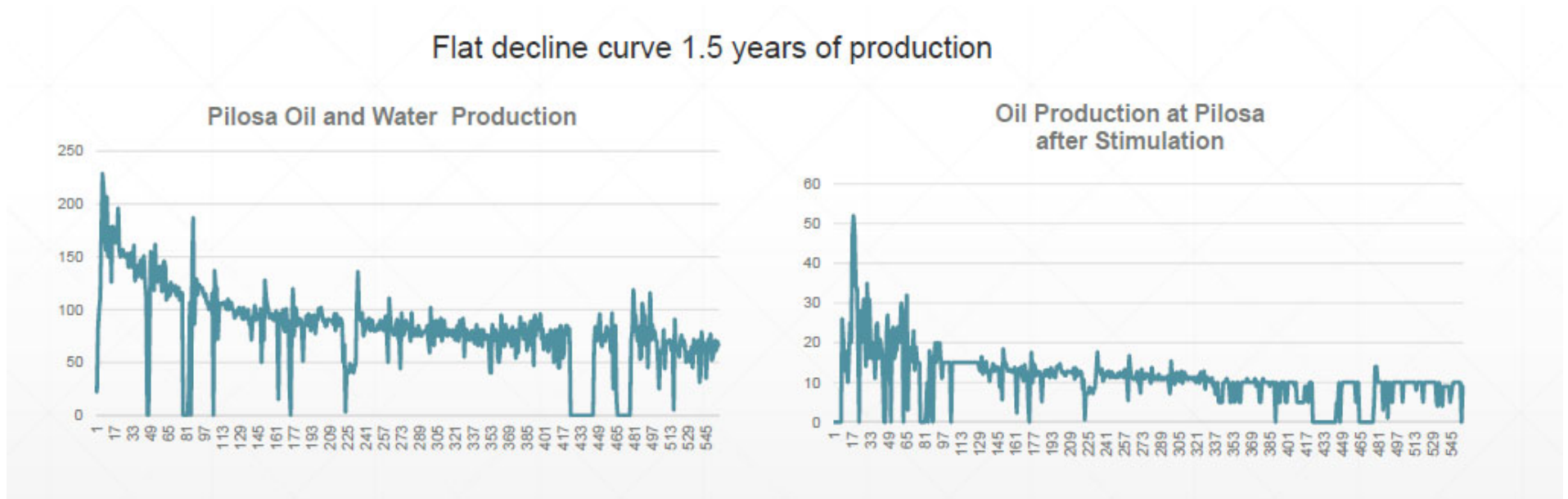
Petrophysics: Theory and Practice of Measuring Reservoir Rock and Fluid Transport Properties, Djebbar Tiab, and Erle Donaldson, 2nd ed., p.427

Micro-Fractures < 40 microns



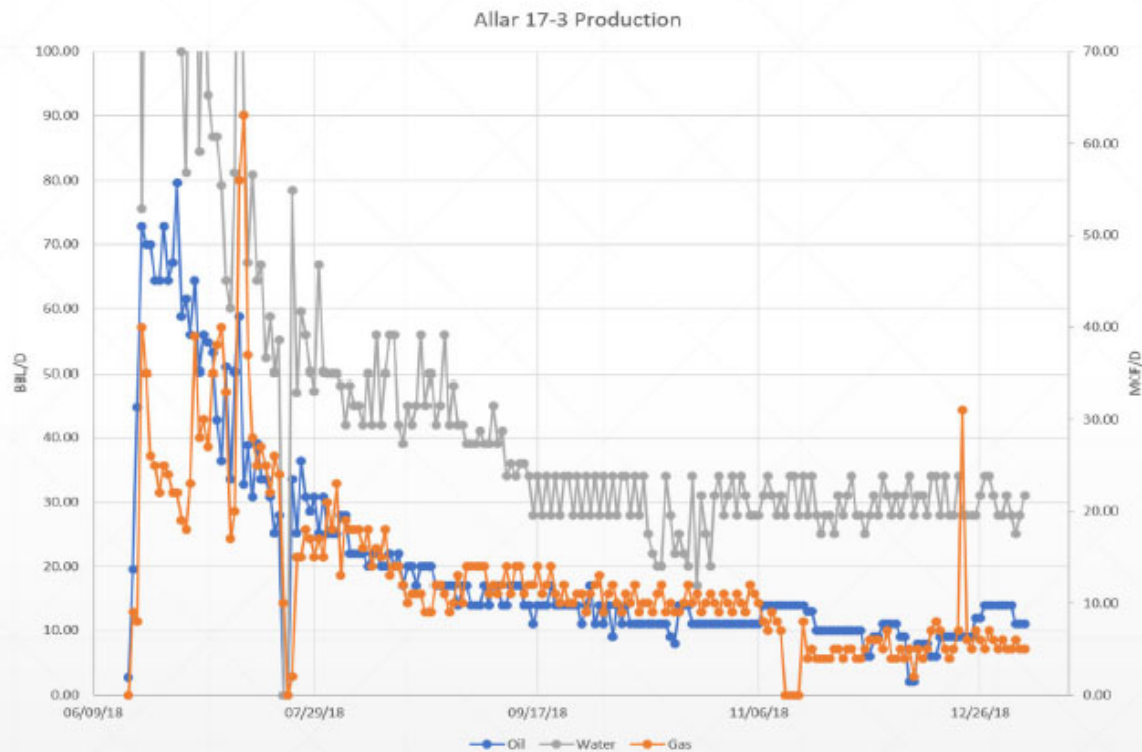
Horizontal San Miguel Oil South Texas

Flat decline curve 1.5 years of production



Wilcox gas well fraced into water zone
400 bbl of fluid per day conductivity very high

Wolfberry Vertical Well West Texas



- Cumulative oil production since June was 3,250 bbl
- Cost of Liquid Frac investment (all included) was recovered in 10 weeks

IP 70 BOPD

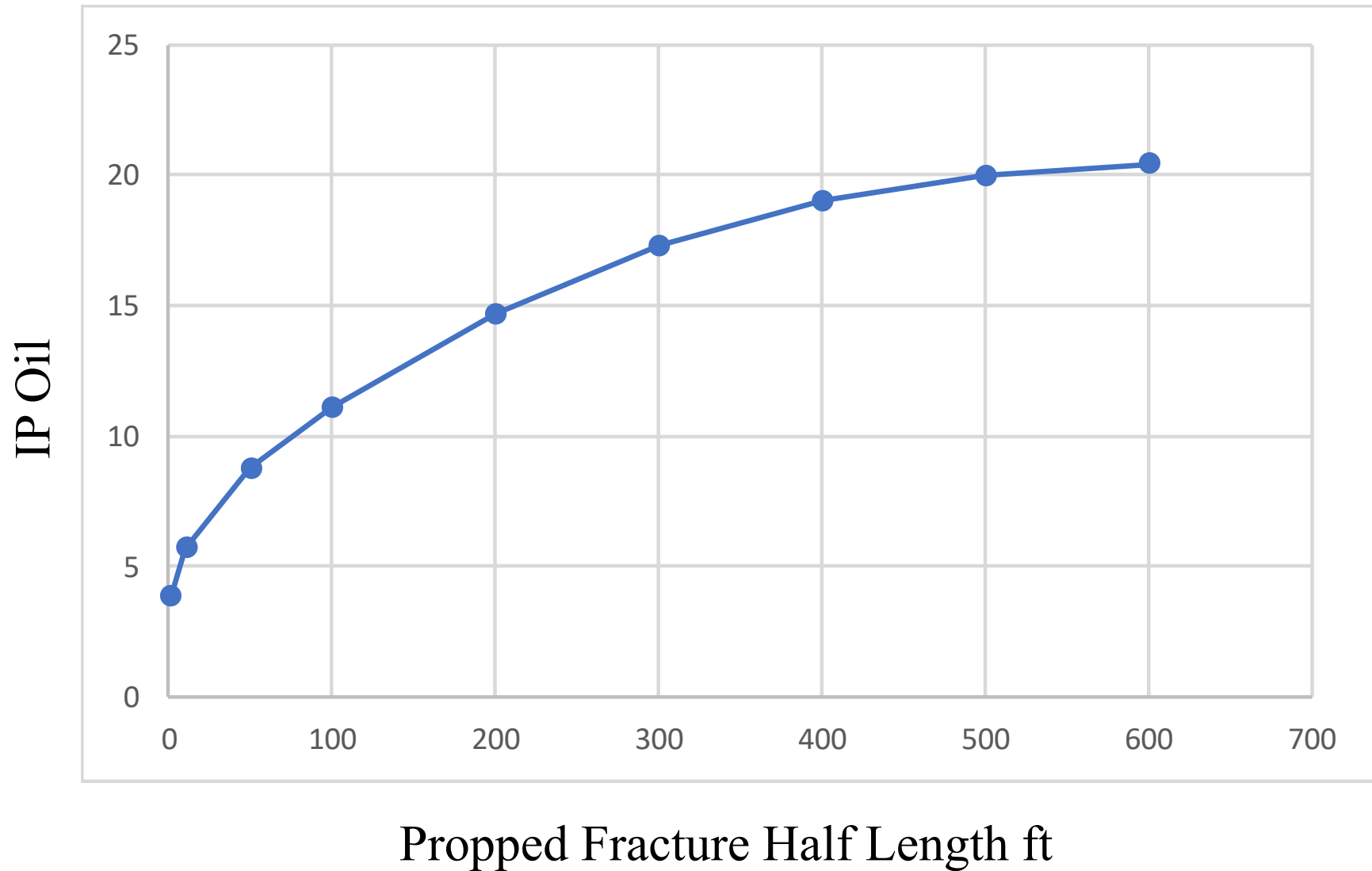
Safety and Environmental Benefits

- With increased proppant densities we pump, we have:
 - Lower water requirements (0 for mineral oil)
 - Minimized equipment footprint on location
 - Reduction in road transportation exposure
 - Reduction in personnel required
 - Reduction in noise level
 - Reduction in carbon emissions
 - No chemicals used in treatment other than surfactants, no polymers used in fluids
 - Able to pump with filtered production water
 - Able to pump with 2% KCL fresh water

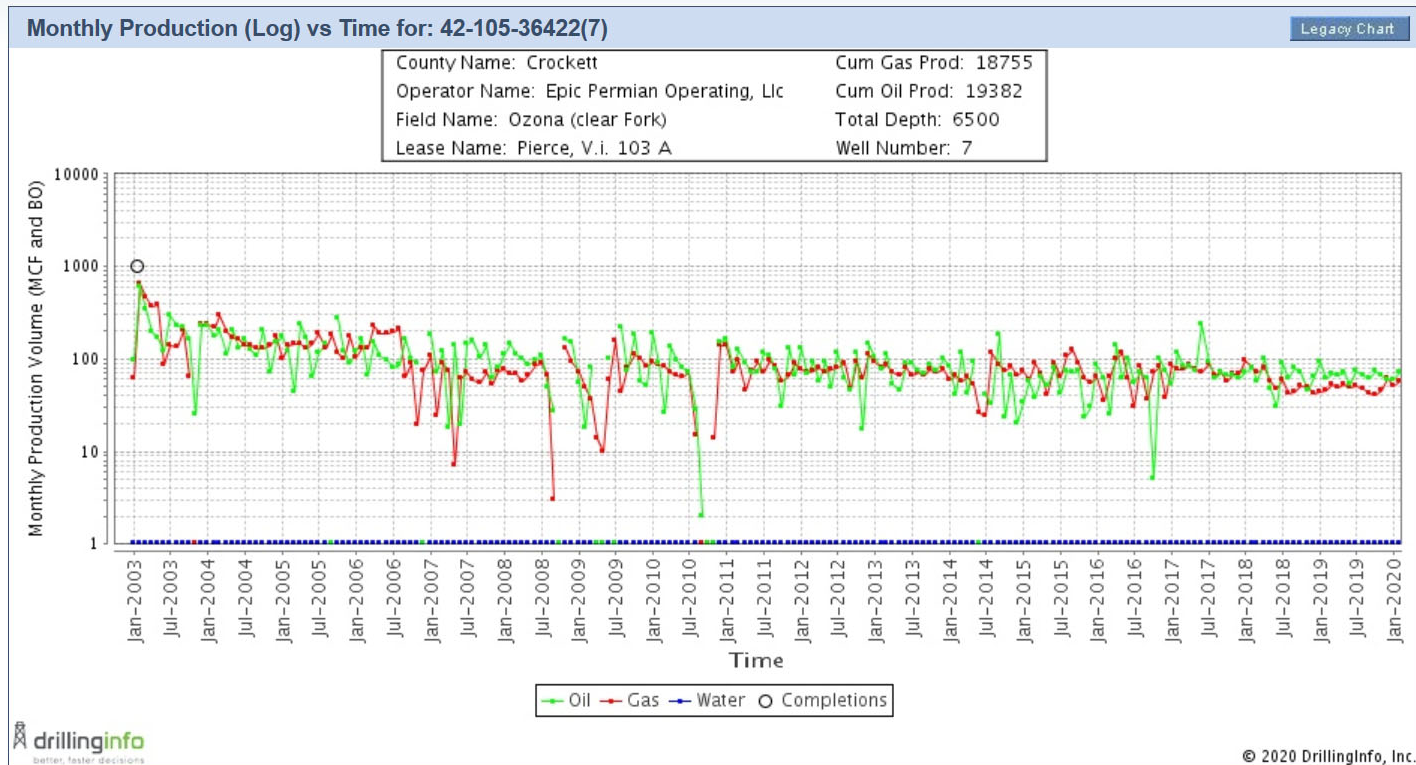
Clearfork Formation Volume Factor

Oil Gravity	37	API	
Gas-Oil Ratio	1,270	cu ft/Bbl	
Gas Gravity	0.75		
Reservoir temp	103	F	Bubble Point Pressure
Seperator Temp	70	F	4,197
Seperator Press	100	Psia	Formation Volume Factor
Reservoir Press	1,254	Psia	1.1658

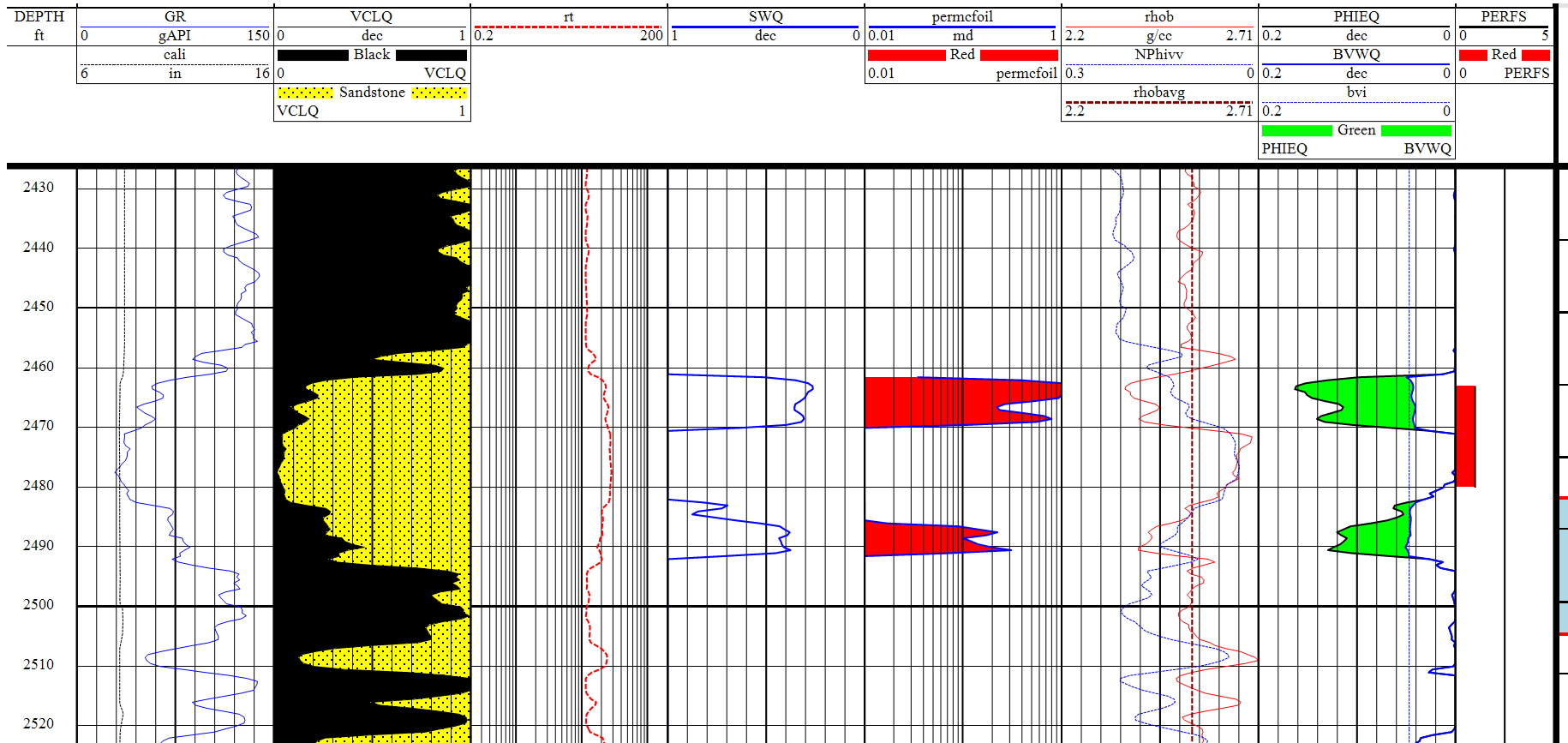
4210537213 Montgomery 11-15 IP vs Xf



4210536422 V.I. PIERCE NO. 103-7

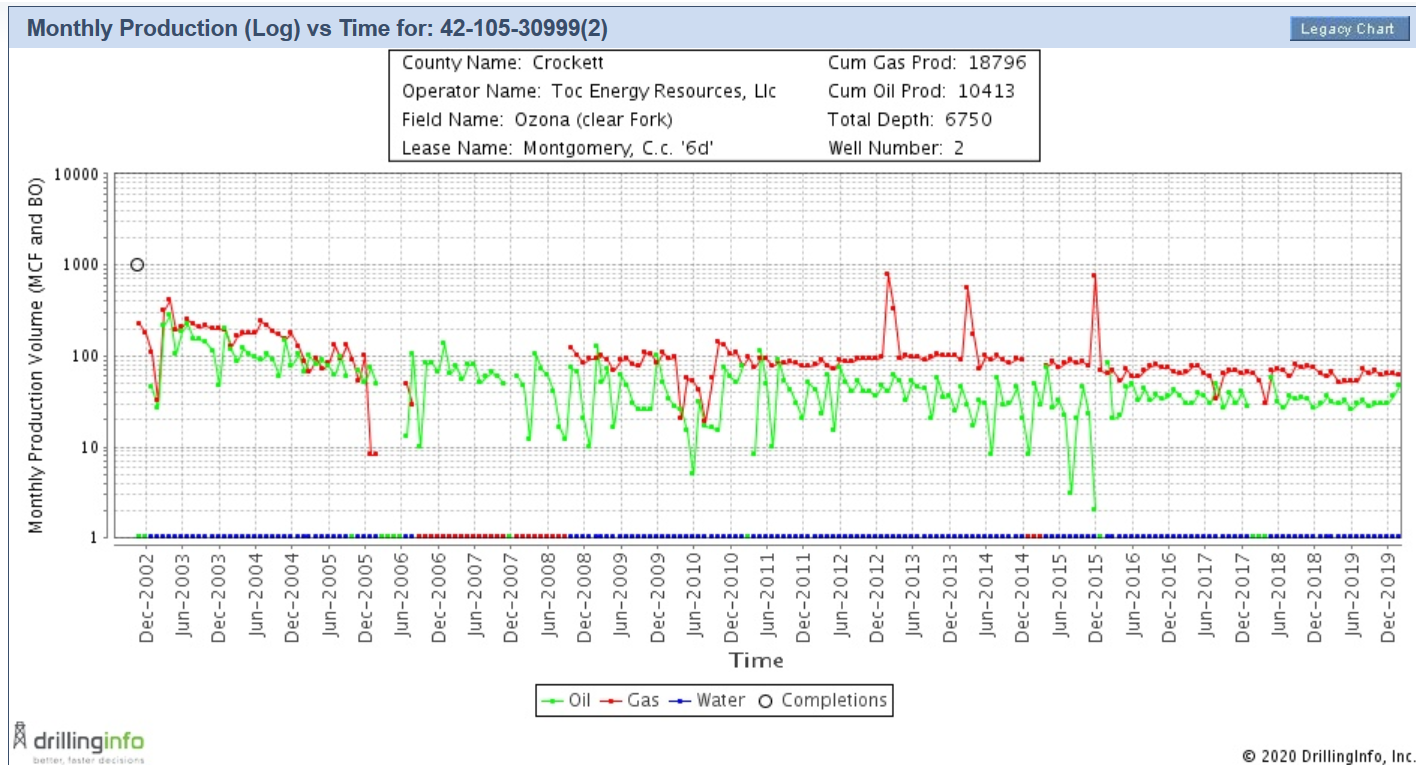


4210536422 V.I. PIERCE NO. 103-7



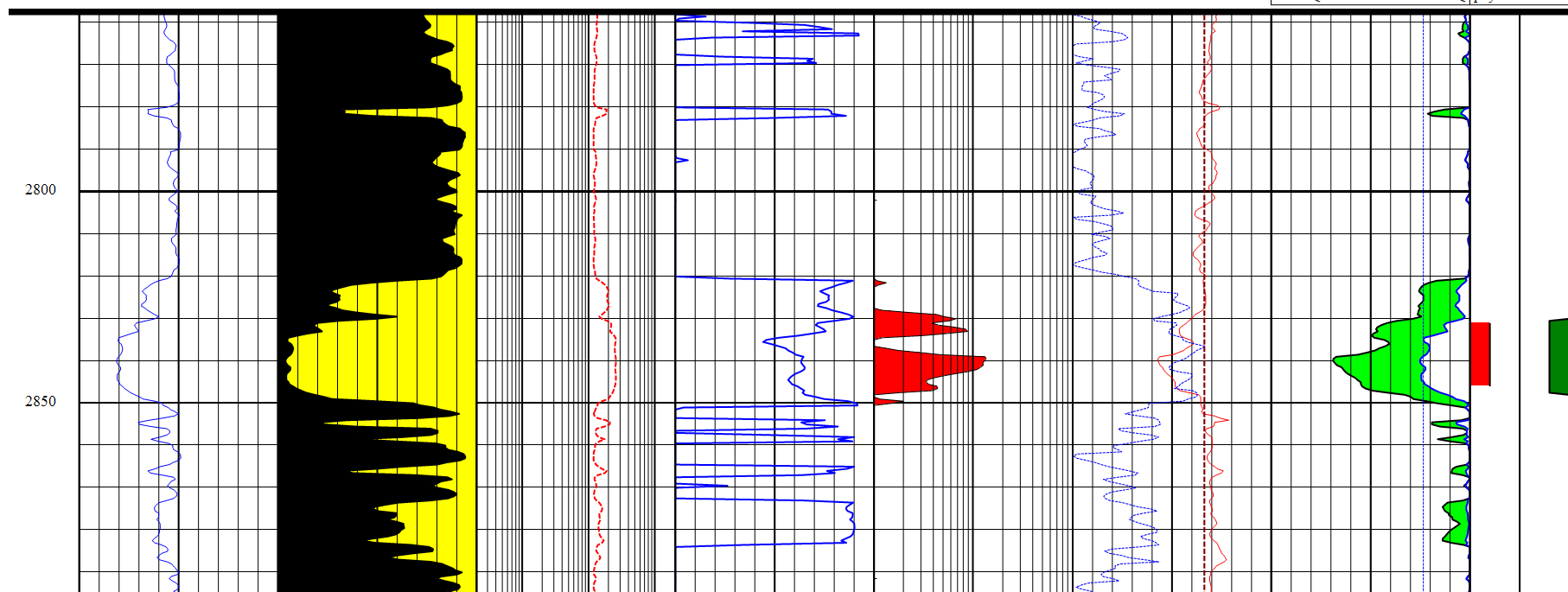
Top	Base	H	PHI	SW	Perm	BVW	OOIP 40	15% RF	FVF	CUM	EUR	RF
2461.5	2491	14	0.126	0.358	0.531	0.045	300,371	45,056	1.17			8.0%

4210530999 CC MONTGOMERY 2-6



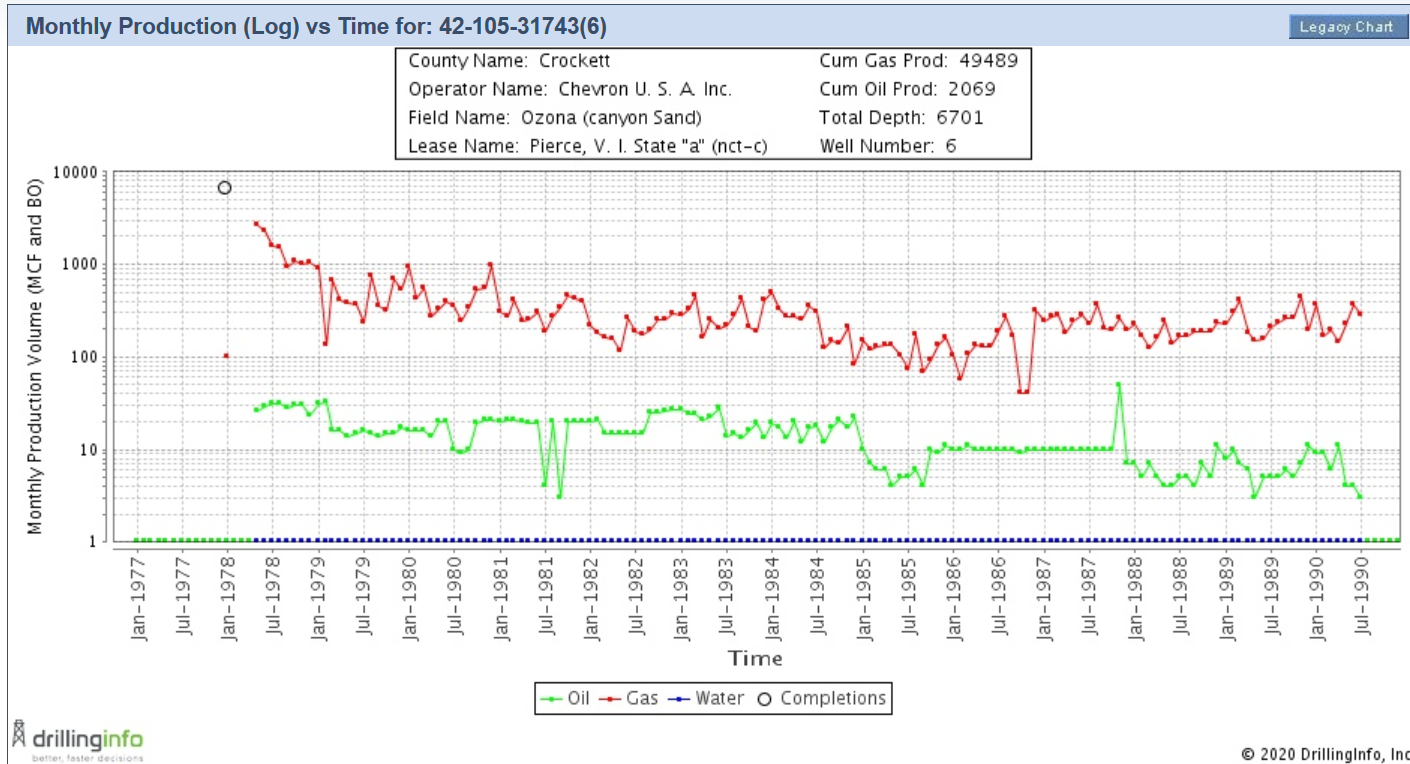
4210530999 CC MONTGOMERY 2-6

DEPTH	GR	VCLQ	RT	SWQ	PERMCFOIL	RHOB NORM	PHIEQ	PERFS
ft	0 gAPI 150	0 dec 1	0.2 200	1 dec 0	0.01 md 1	2.2 None 2.71	0.2 dec 0	0 5
		Black VCLQ			Red PERMCFOIL	NPHinorm	BVWQ	pay
		0 VCLQ			.01 PERMCFOIL	0.3	0.2 dec 0	5 0
		Yellow VCLQ				rhobavg	BVICL FK	0 0 PERFS
		0 VCLQ 1				2.2 2.71	0.2	0 0 PERFS
							Green BVWQ	Dk Green pay 0



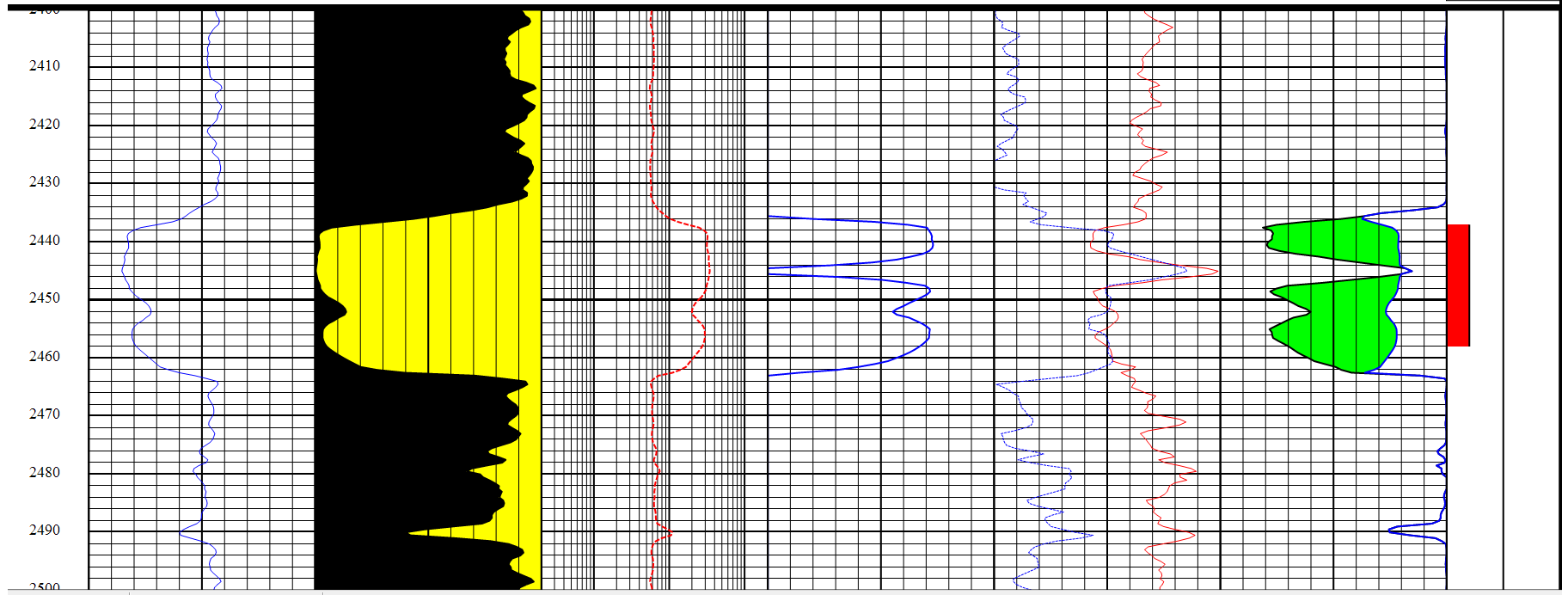
Top	Base	H	PHI	SW	Perm	BVW	OOIP 40	15% RF	FVF	CUM	EUR	RF
2830.5	2847.5	17.5	0.106	0.38	0.056	0.040	305,042	45,756	1.17		13,496	4.4%

4210531743 Gulf Pierce 6CA



4210531743 Gulf Pierce 6CA

DEPTH	GR	VCLQ	RT	SWQ	RHOB	PHIEQ	PERFS
ft	gAPI	dec	(LLS)	dec	g/cc	dec	(OLDPERF)
0	150	0	0.2	1	2.2	0.2	0
		Black			NPHIVV	BVWQ	5
		0	0.2	200	0.3	0.2	0
		Yellow				Green	Red
		VCLQ				PHIEQ	PERFS
						BVWQ	Dk_Red
							OLDPERF
							0



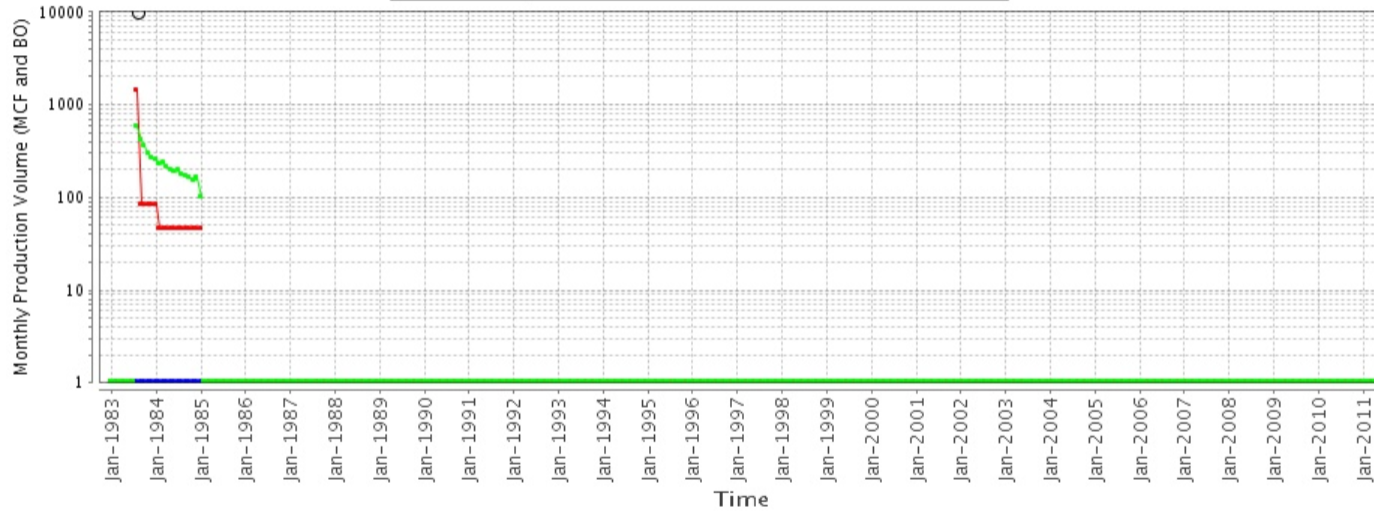
Top	Base	H	PHI	SW	Perm	BVW	OOIP 40	15% RF	FVF	CUM	EUR	RF
2437	2462.5	21	0.114	0.372	0.077	0.042	398,756	59,813	1.17		11800	3.0%

4210531777 JOHNSON 23

Monthly Production (Log) vs Time for: 42-105-31777(203)

Legacy Chart

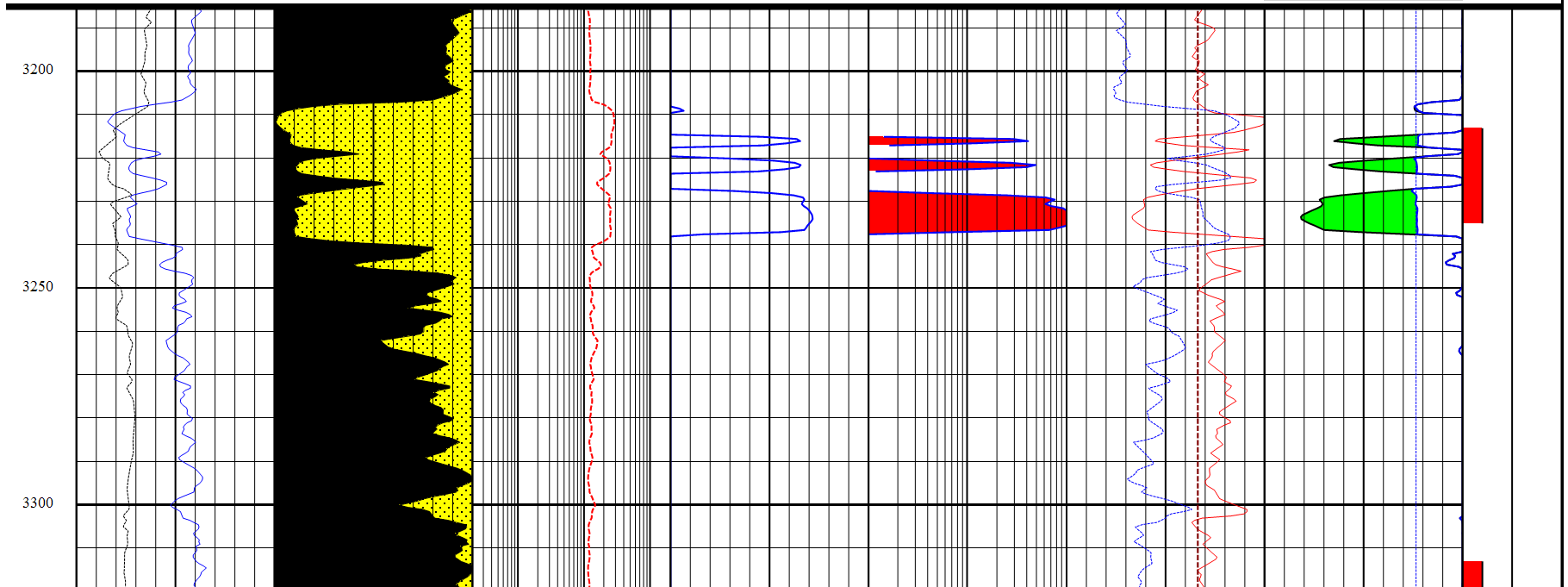
County Name: Crockett	Cum Gas Prod: 2326
Operator Name: Bedrock Production, Llc	Cum Oil Prod: 4306
Field Name: Refoil (3200 Sand)	Total Depth: 9941
Lease Name: Johnson	Well Number: 203



Oil Gas Water Completions

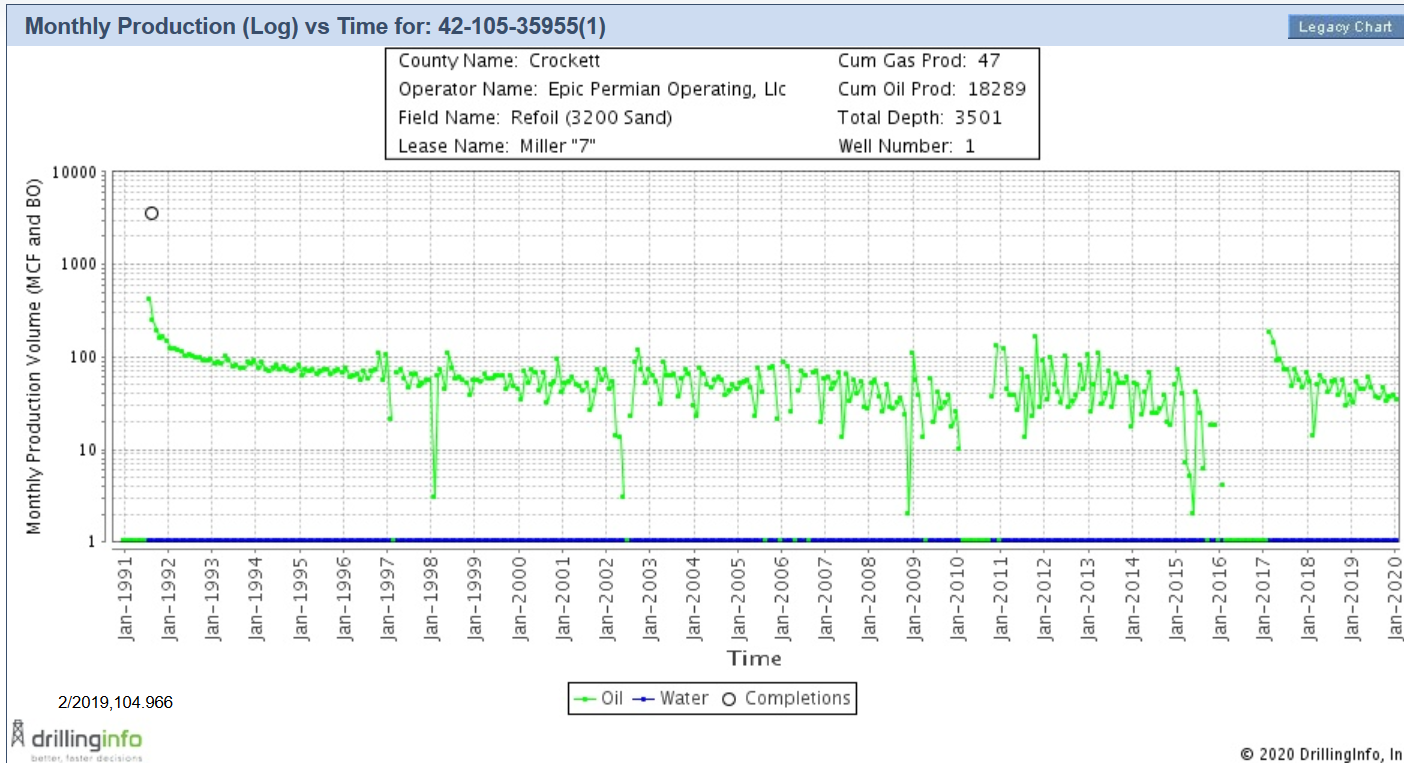
4210531777 JOHNSON 23

DEPTH	GR	VCLQ	rt	SWQ	permfoil	rhob	PHIEQ	PERFS
ft	gAPI	dec		dec	md	g/cc	dec	None
0	150	0	0.2	1	0.01	2.2	0.2	0
	cali	Black			Red	NPhivv	BVWQ	Red
6	16	0			0.01	0.3	0.2	0
	in	VCLQ			permfoil	rhobavg	dec	PERFS
		Sandstone				None	bvi	
		VCLQ				2.2	0.2	
							PHIEQ	
							Green	
							BVWQ	



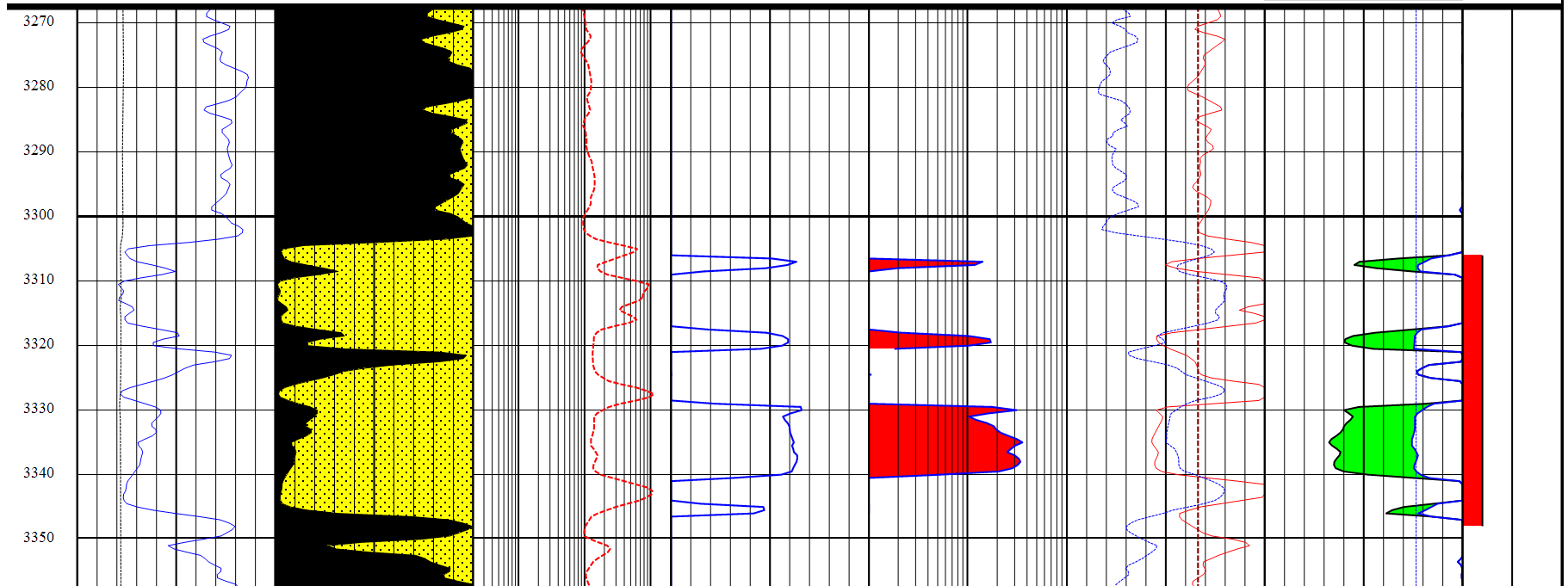
Top	Base	H	PHI	SW	Perm	BVW	OOIP 40	15% RF	FVF	CUM	EUR
3215	3237	15	0.131	0.351	0.667	0.046	338,245	50,737	1.17		

4210535955 MILLER "7" 1



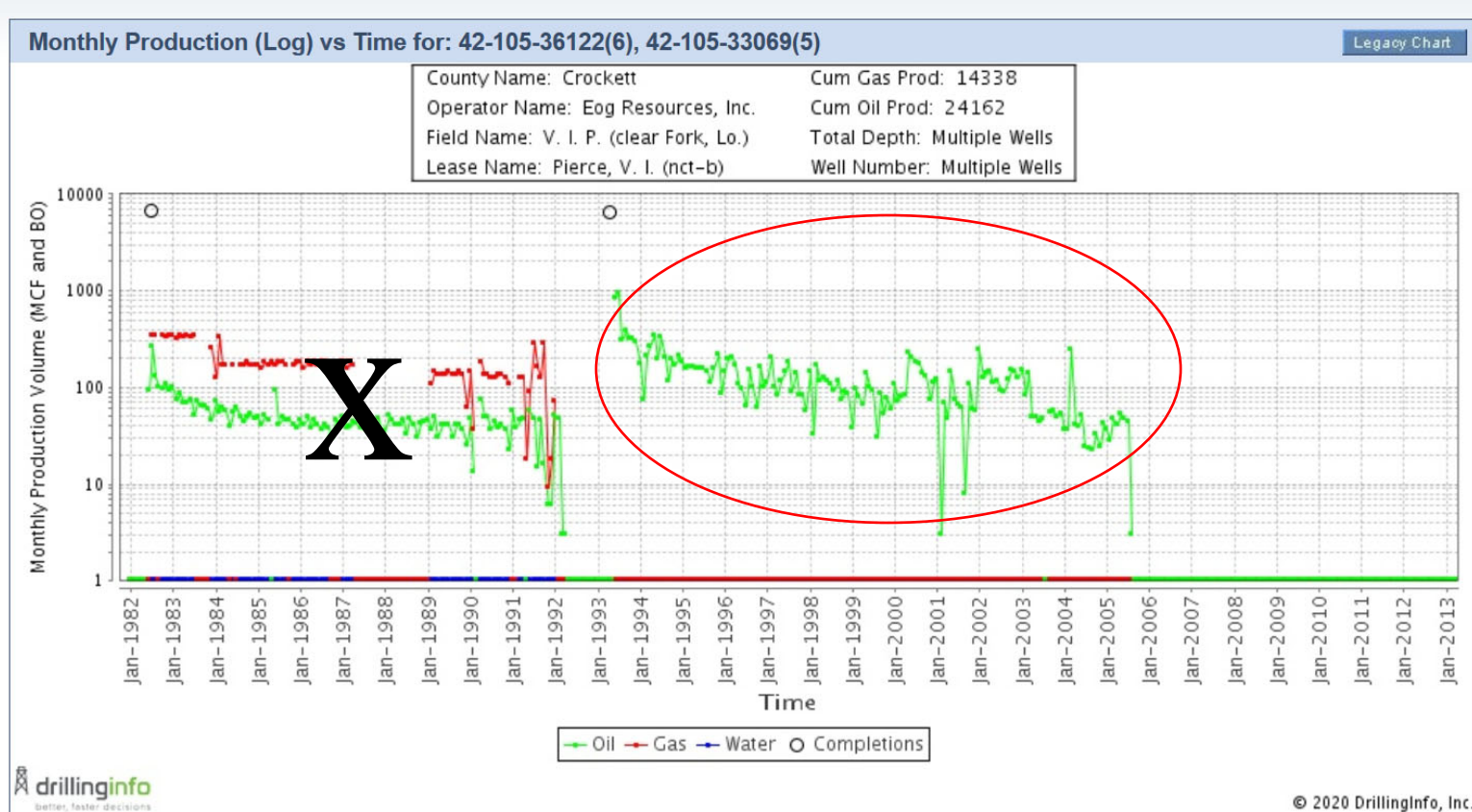
4210535955 MILLER "7" 1

DEPTH	GR	VCLQ	RD	SWQ	permfoil	rhob	PHIEQ	PERFS
ft	0 gAPI 150	0 dec 1	0.2 ohmm 200	1 dec 0	0.01 md 1	2.2 g/cc 2.71	0.2 dec 0	0 5
	6 cali in 16	0 Black VCLQ			0.01 Red permfoil	0.3 NPhivv	0.2 BVWQ dec 0	0 Red PERFS
		0 Sandstone VCLQ 1				2.2 rhobavg 2.71	0.2 bvi 0	
							Green PHIEQ BVWQ	



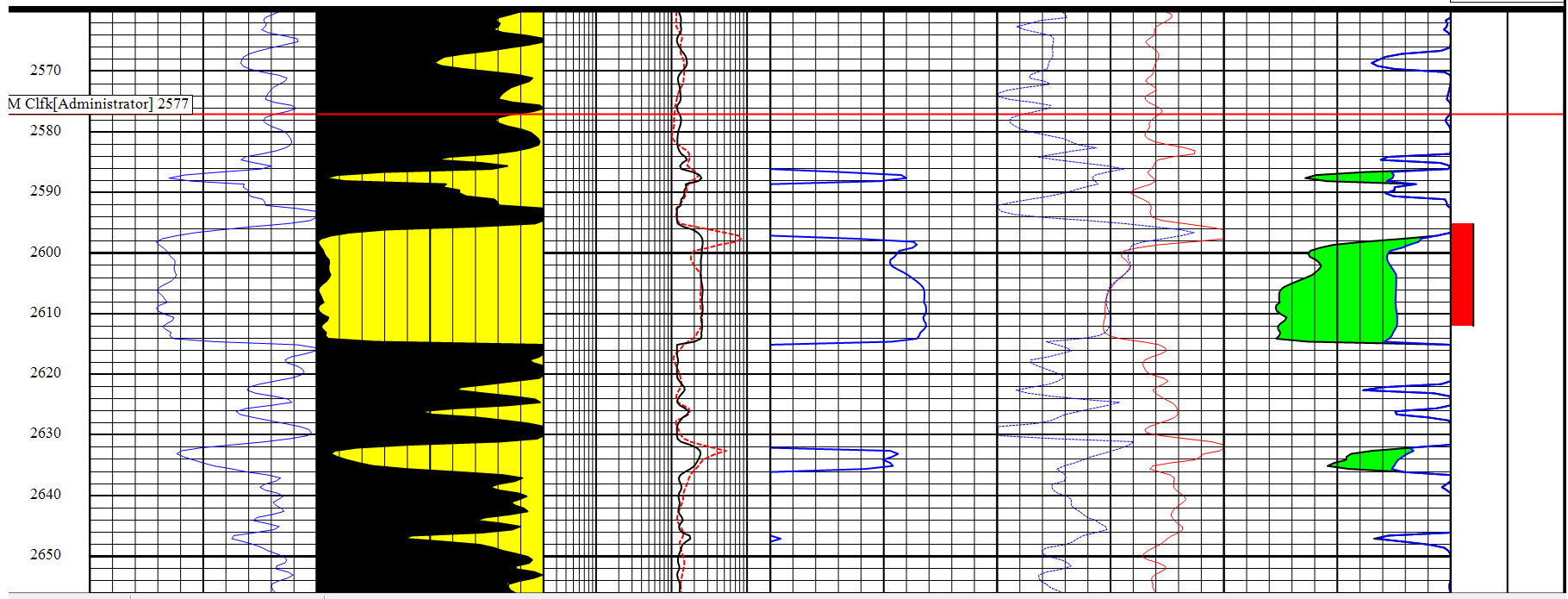
Top	Base	H	PHI	SW	Perm	BVW	OOIP 40	15% RF	FVF	CUM	EUR	RF
3307	3346	16.5	0.114	0.408	0.184	0.047	295,348	44,302	1.17		18,289	6.2%

4210536122 V.I. PIERCE (NCI-B) #6



4210536122 V.I. PIERCE (NCI-B) #6

DEPTH	GR	VCLQ	LLD	SWQ	RHOB	PHIEQ	PERFS
ft	gAPI	dec	ohmm	dec	g/cc	dec	
0	150	0	200	0	2.2	0	0
		Black	RT		NPHIVV	BVWQ	(OLDPERF)
		0	200		0.3	0	5
		Yellow				PHIEQ	Red
		VCLQ				BVWQ	Dk Red
		1					OLDPERF
							0



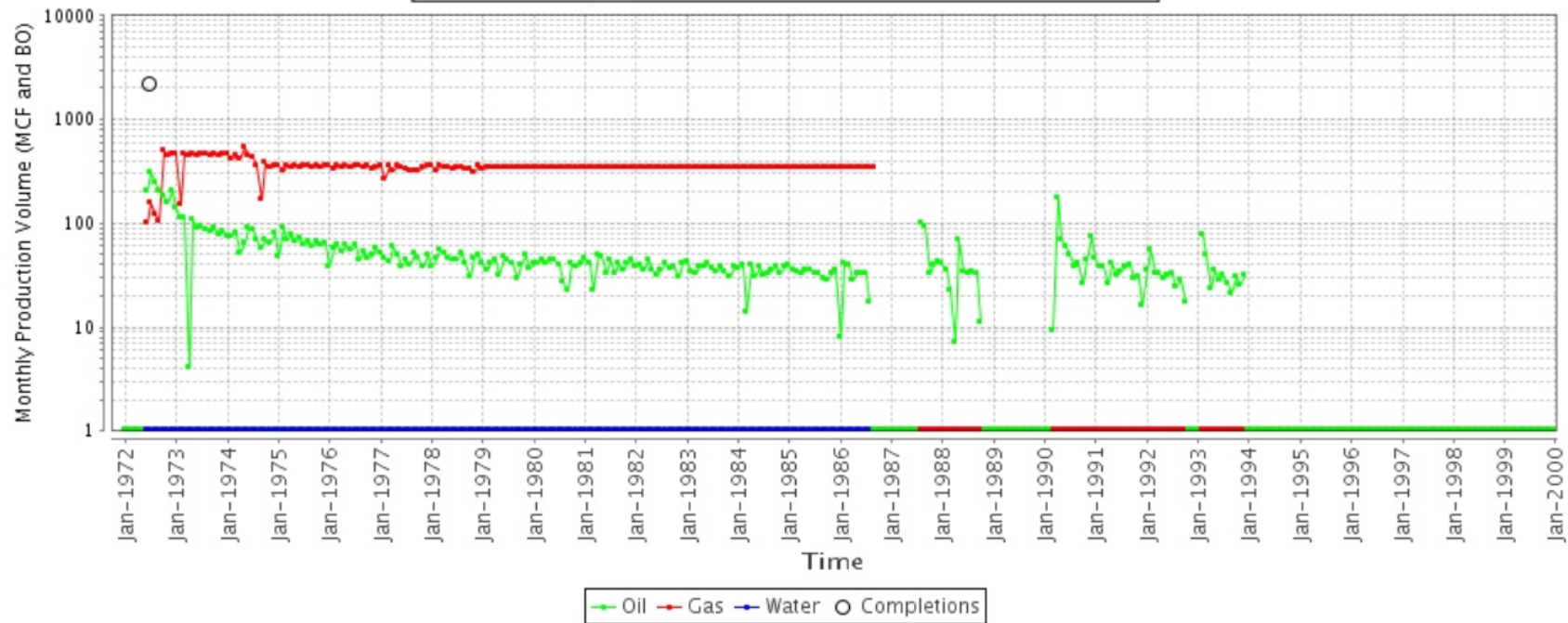
Top	Base	H	PHI	SW	Perm	BVW	OOIP 40	15% RF	FVF	CUM	EUR	RF
2599	2614	15.5	0.109	0.427	0.042	0.047	256,766	38,515	1.17		24,162	9.4%

4210530344 CLEGG -C- 383

Monthly Production (Log) vs Time for: 42-105-30344(383)

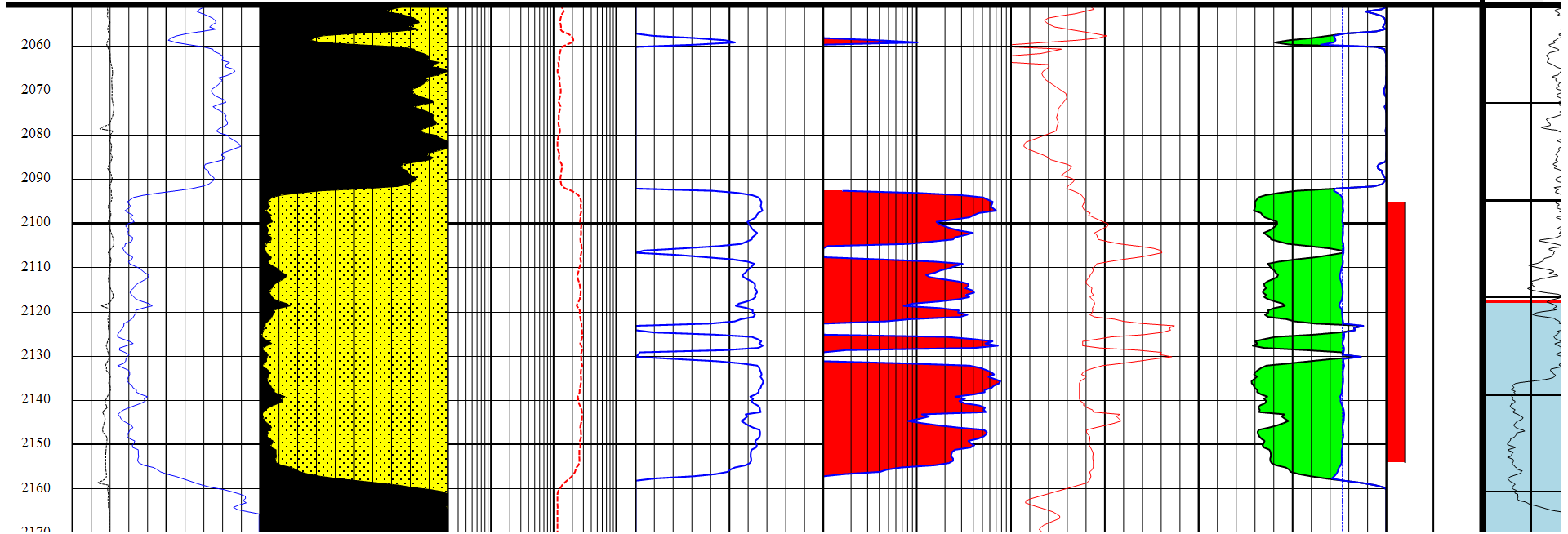
Legacy Chart

County Name: Crockett	Cum Gas Prod: 58928
Operator Name: Anadarko E&p Company Lp	Cum Oil Prod: 11503
Field Name: Ozona (clear Fork)	Total Depth: 2190
Lease Name: Clegg -c-	Well Number: 383



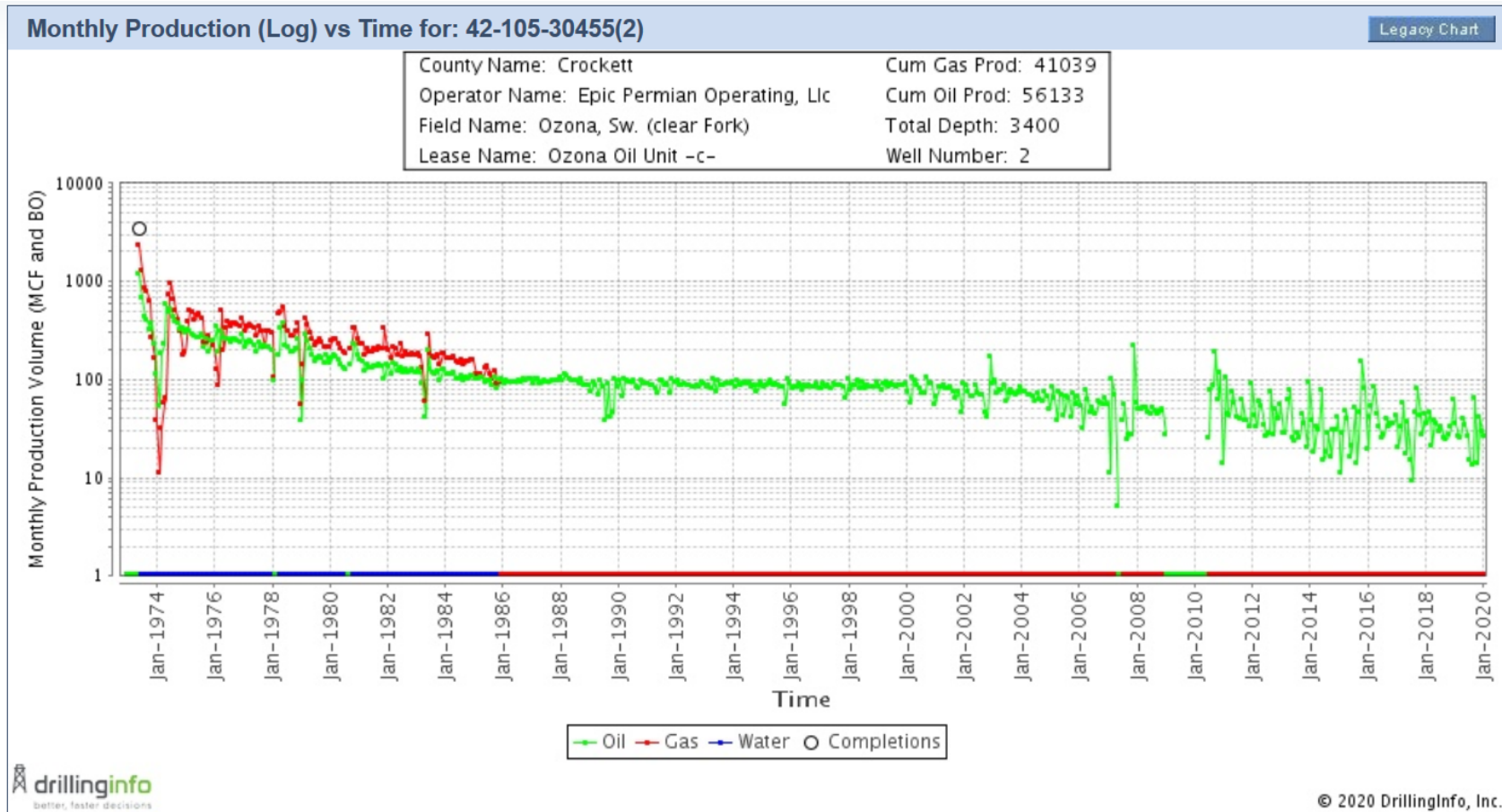
4210530344 CLEGG -C- 383

dt	1	vc	2	sw	perm	3	BV	psi
DEPTH	GR	VCLQ	rt	SWQ	permefoil	DTp	PHIEQ	PERFS
ft	0 gAPI 150	0 dec 1	0.2 200	1 dec 0	0.01 md 1	100 us/ft 50	0.2 dec 0	0 None 5
	6 cali	Black VCLQ			0.01 Red permefoil	(NPhivv) 0.3	BVWQ dec 0	Red PERFS
	in 16	Sandstone VCLQ				(rhobavg) 2.2 2.71	bvi 0.2 0	
							Green PHIEQ BVWQ	



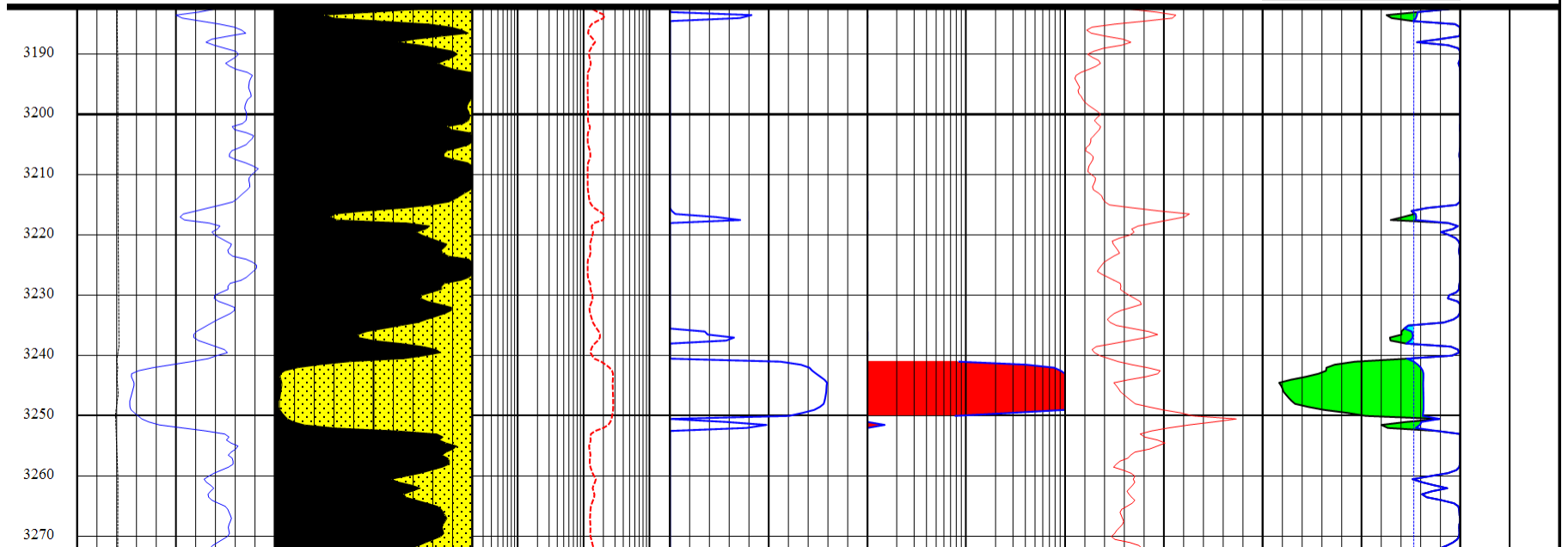
Top	Base	H	PHI	SW	Perm	BVW	OOIP 40	15% RF	FVF	CUM	EUR	RF
2058.5	2156.5	59.5	0.123	0.384	0.309	0.047	1,195,712	179,357	1.17	11,503	11,503	1.0%

4210530455 OZONA OIL UNIT -C- 2



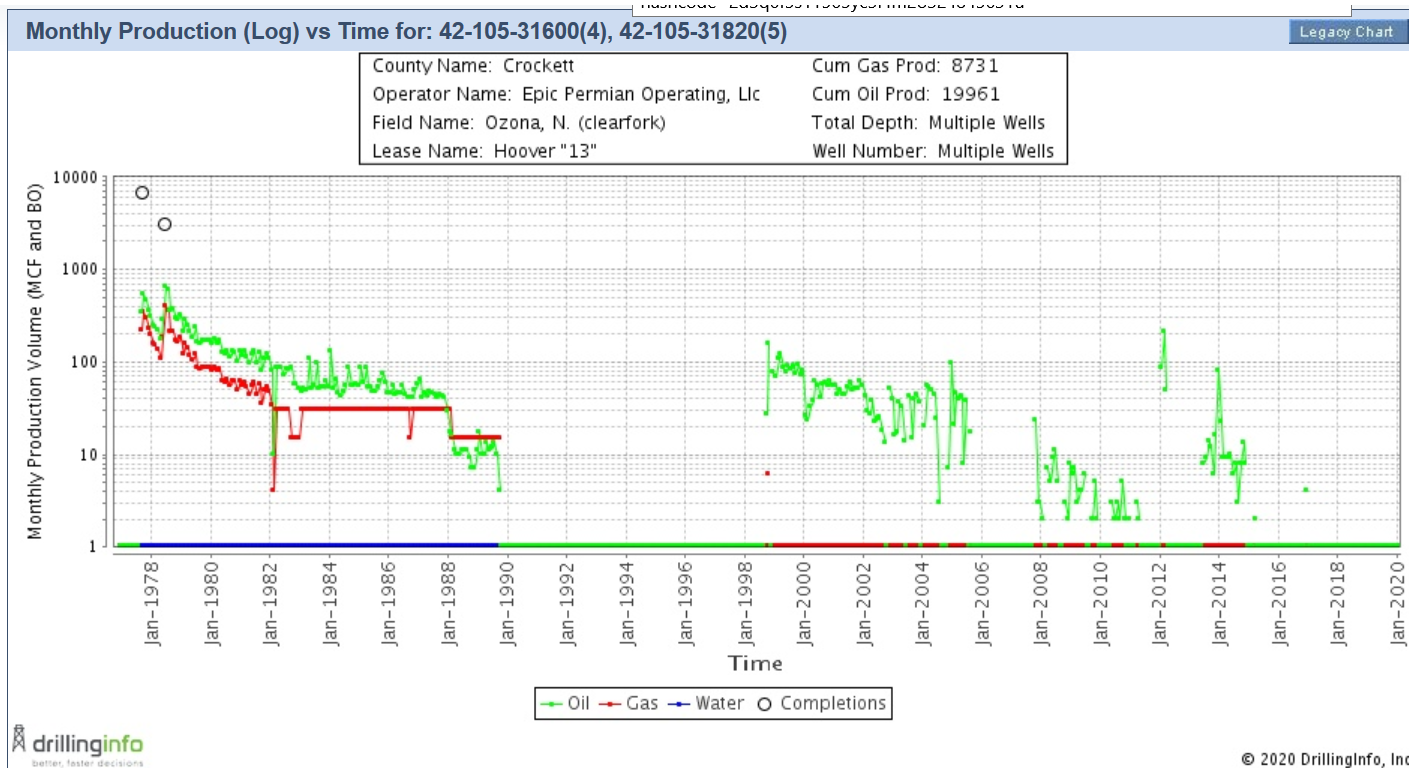
4210530455 OZONA OIL UNIT -C- 2

DEPTH	GR	VCLQ	rt	SWQ	permcofil	dt	PHIEQ	(PERFS)
ft	0	dec	0.2	1	0.01	100	0.2	0
	gAPI 150	dec 1		dec 0	md 1	us/ft 50	dec 0	5
	cali	Black			Red	(NPhivv)	BVWQ	Red
6	in 16	VCLQ			0.01 permcofil	0.3	dec 0	0 PERFS
		Sandstone				(rhobavg)	bvi	
		VCLQ 1				2.2 2.71	0.2	
							Green	
							PHIEQ BVWQ	
							Cyan	
							BVWQ bvi	



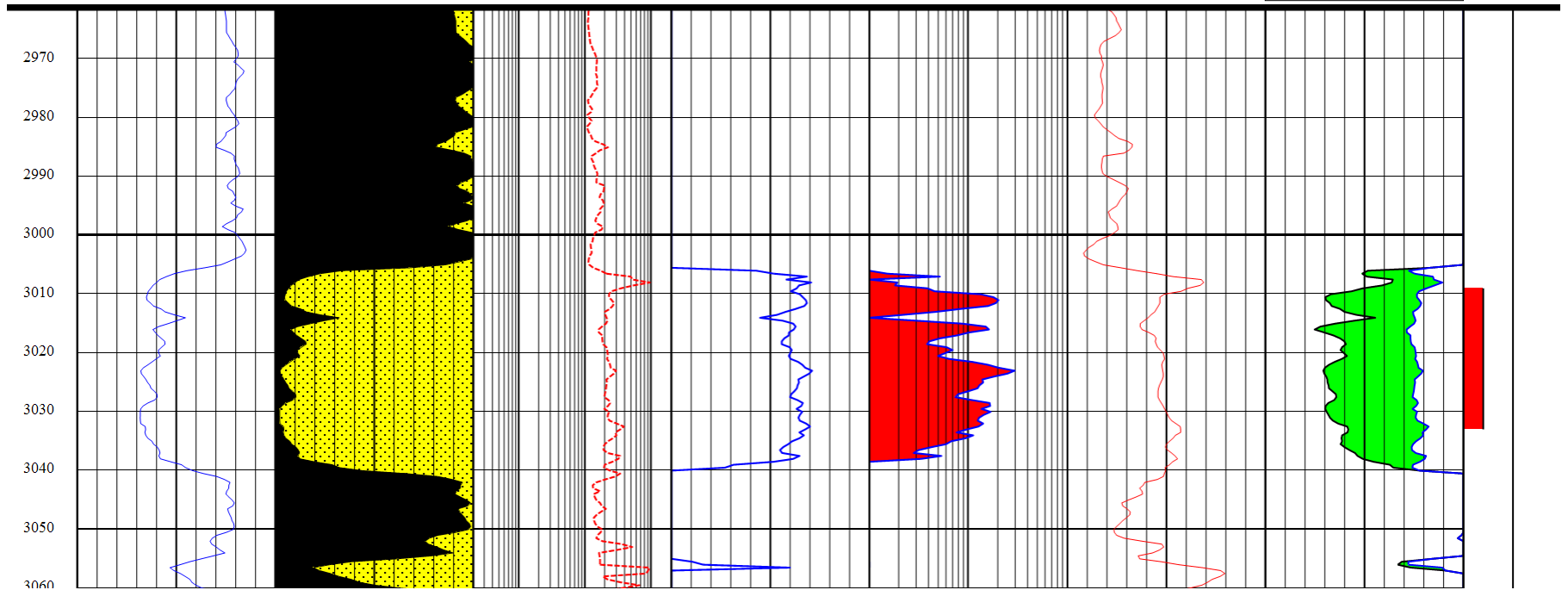
Top	Base	H	PHI	SW	Perm	BVW	OOIP 40	15% RF	FVF	CUM	EUR	RF
3241	3252	10.5	0.145	0.267	2.753	0.039	295,996	44,399	1.17		56,133	19.0%

4210531600 Epic Hoover 13-4



4210531600 Epic Hoover 13-4

DEPTH	GR		VCLQ		GUARD		SWQ		permefoil		DT		PHIEQ		PERFS	
ft	0	150	0	1	0.2	200	1	0	0.01	1	100	50	0.2	0	0	5
	gAPI		dec				dec		md		us/ft		dec			
	(cali)		Black						Red		(NPhivv)		BVWQ		Red	
	6	16		VCLQ					0.01	permefoil	0.3	0	0.2	dec	0	0
	in		Sandstone								(rhobavg)		(bvi)			PERFS
			VCLQ								2.2	2.71	0.2			
													Green			
													PHIEQ	BVWQ		



Top	Base	H	PHI	SW	Perm	BVW	OOIP 40	15% RF	FVF	CUM	EUR	RF
3006	3038.5	33	0.123	0.377	0.096	0.046	670,704	100,606	1.17		13,002	1.9%